



# Searches after Gravitational Waves Using ARizona Observatories (SAGUARO): System Overview and First Results from Advanced LIGO/Virgo's Third Observing Run

M. J. Lundquist<sup>1</sup> , K. Paterson<sup>2</sup> , W. Fong<sup>2</sup> , D. J. Sand<sup>1</sup> , J. E. Andrews<sup>1</sup> , I. Shivaeei<sup>1,29</sup> , P. N. Daly<sup>1</sup>, S. Valenti<sup>3</sup> , S. Yang<sup>3,4,5</sup> , E. Christensen<sup>6</sup>, A. R. Gibbs<sup>6</sup> , F. Shelly<sup>6</sup>, S. Wyatt<sup>1</sup>, O. Eskandari<sup>2,7</sup>, O. Kuhn<sup>8</sup>, R. C. Amaro<sup>1</sup> , I. Arcavi<sup>9</sup> , P. Behroozi<sup>1</sup> , N. Butler<sup>10</sup> , L. Chomiuk<sup>11</sup> , A. Corsi<sup>12</sup> , M. R. Drout<sup>13,14</sup>, E. Egami<sup>1</sup>, X. Fan<sup>1</sup> , R. J. Foley<sup>15</sup>, B. Frye<sup>1</sup>, P. Gabor<sup>16</sup>, E. M. Green<sup>1</sup>, C. J. Grier<sup>1</sup> , F. Guzman<sup>1,17</sup> , E. Hamden<sup>1</sup>, D. A. Howell<sup>18</sup> , B. T. Jannuzi<sup>1</sup> , P. Kelly<sup>19</sup> , P. Milne<sup>1</sup> , M. Moe<sup>1</sup>, A. Nugent<sup>2</sup> , E. Olszewski<sup>1</sup>, E. Palazzi<sup>20</sup> , V. Paschalidis<sup>1</sup>, D. Psaltis<sup>1</sup>, D. Reichart<sup>21</sup> , A. Rest<sup>22,23</sup> , A. Rossi<sup>20</sup> , G. Schroeder<sup>2</sup> , P. S. Smith<sup>1</sup>, N. Smith<sup>1</sup>, K. Spekkens<sup>24</sup> , J. Strader<sup>11</sup> , D. P. Stark<sup>1</sup>, D. Trilling<sup>25</sup> , C. Veillet<sup>1,8</sup>, M. Wagner<sup>8,26</sup>, B. Weiner<sup>1,27</sup> , J. C. Wheeler<sup>28</sup> , G. G. Williams<sup>1,27</sup> , and A. Zabludoff<sup>1</sup>

<sup>1</sup> Steward Observatory, University of Arizona, 933 North Cherry Avenue, Tucson, AZ 85721-0065, USA

<sup>2</sup> Center for Interdisciplinary Exploration and Research in Astrophysics and Department of Physics and Astronomy, Northwestern University, 2145 Sheridan Road, Evanston, IL 60208-3112, USA

<sup>3</sup> Department of Physics, University of California, 1 Shields Avenue, Davis, CA 95616-5270, USA

<sup>4</sup> Department of Physics and Astronomy Galileo Galilei, University of Padova, Vicolo dell'Osservatorio, 3, I-35122 Padova, Italy

<sup>5</sup> INAF Osservatorio Astronomico di Padova, Vicolo dell'Osservatorio 5, I-35122 Padova, Italy

<sup>6</sup> Lunar and Planetary Lab, Department of Planetary Sciences, University of Arizona, Tucson, AZ 85721, USA

<sup>7</sup> Department of Physics and Astronomy, Dartmouth College, Hanover, NH 03755, USA

<sup>8</sup> Large Binocular Telescope Observatory, 933 North Cherry Avenue, Tucson, AZ, USA

<sup>9</sup> The School of Physics and Astronomy, Tel Aviv University, Tel Aviv 69978, Israel

<sup>10</sup> School of Earth and Space Exploration, Arizona State University, Tempe, AZ 85287, USA

<sup>11</sup> Center for Data Intensive and Time Domain Astronomy, Department of Physics and Astronomy, Michigan State University, East Lansing, MI 48824, USA

<sup>12</sup> Department of Physics and Astronomy, Texas Tech University, Box 1051, Lubbock, TX 79409-1051, USA

<sup>13</sup> Department of Astronomy and Astrophysics, University of Toronto, 50 St. George Street, Toronto, Ontario, M5S 3H4, Canada

<sup>14</sup> The Observatories of the Carnegie Institution for Science, 813 Santa Barbara St., Pasadena, CA 91101, USA

<sup>15</sup> Department of Astronomy and Astrophysics, University of California, Santa Cruz, CA 95064, USA

<sup>16</sup> Vatican Observatory, 00120 Città del Vaticano, Vatican City State, Vatican City

<sup>17</sup> College of Optical Sciences, University of Arizona, 1630 E University Boulevard, Tucson, AZ 85719, USA

<sup>18</sup> Las Cumbres Observatory, 6740 Cortona Drive, Suite 102, Goleta, CA 93117-5575, USA

<sup>19</sup> College of Science & Engineering, Minnesota Institute for Astrophysics, University of Minnesota, 115 Union St. SE, Minneapolis, MN 55455, USA

<sup>20</sup> INAF—Osservatorio di Astrofisica e Scienza dello Spazio—Via Piero Gobetti 93/3, I-40129 Bologna, Italy

<sup>21</sup> Department of Physics and Astronomy, University of North Carolina at Chapel Hill, Chapel Hill, NC 27599, USA

<sup>22</sup> Space Telescope Science Institute, 3700 San Martin Drive, Baltimore, MD 21218, USA

<sup>23</sup> The Johns Hopkins University, Baltimore, MD 21218, USA

<sup>24</sup> Department of Physics and Space Science Royal Military College of Canada P.O. Box 17000, Station Forces Kingston, ON K7K 7B4, Canada

<sup>25</sup> Department of Physics and Astronomy, Northern Arizona University, P.O. Box 6010, Flagstaff, AZ 86011, USA

<sup>26</sup> Department of Astronomy, The Ohio State University, 140 W. 18th Avenue, Columbus, OH 43210, USA

<sup>27</sup> MMT Observatory, P.O. Box 210065, University of Arizona, Tucson, AZ 85721-0065, USA

<sup>28</sup> Department of Astronomy, University of Texas at Austin, Austin, TX 78712, USA

Received 2019 June 14; revised 2019 July 16; accepted 2019 July 17; published 2019 August 15

## Abstract

We present Searches After Gravitational-waves Using ARizona Observatories (SAGUARO), a comprehensive effort dedicated to the discovery and characterization of optical counterparts to gravitational-wave (GW) events. SAGUARO utilizes ground-based facilities ranging from 1.5 to 10 m in diameter, located primarily in the Northern Hemisphere. We provide an overview of SAGUARO's telescopic resources, its pipeline for transient detection, and its database for candidate visualization. We describe SAGUARO's discovery component, which utilizes the 5 deg<sup>2</sup> field of view optical imager on the Mt. Lemmon 1.5 m telescope, reaching limits of  $\approx 21.3$  AB mag while rapidly tiling large areas. We also describe the follow-up component of SAGUARO, used for rapid vetting and monitoring of optical candidates. With the onset of Advanced LIGO/Virgo's third observing run, we present results from the first three SAGUARO searches following the GW events S190408an, S190425z and S190426c, which serve as a valuable proof-of-concept of SAGUARO. We triggered and searched 15, 60, and 60 deg<sup>2</sup> respectively, 17.6, 1.4, and 41.8 hr after the initial GW alerts. We covered 7.8%, 3.0%, and 5.1% of the total probability within the GW event localizations, reaching  $3\sigma$  limits of 19.8, 21.3, and 20.8 AB mag, respectively. Although no viable counterparts associated with these events were found, we recovered six known transients and ruled out five potential candidates. We also present Large Binocular Telescope spectroscopy of PS19eq/SN2019ebq, a promising kilonova candidate that was later determined to be a supernova. With the ability to tile large areas and conduct detailed follow-up, SAGUARO represents a significant addition to GW counterpart searches.

*Unified Astronomy Thesaurus concepts:* Gravitational wave astronomy (675); Transient detection (1957); Ground-based astronomy (686)

<sup>29</sup> Hubble Fellow.

## 1. Introduction

The onset of the advanced era of gravitational-wave (GW) detectors has heralded a new era of discovery. The Advanced Laser Interferometer Gravitational-wave Observatory (Abbott et al. 2009) and Advanced Virgo (Acernese et al. 2015; hereafter termed “LVC”) have discovered a total of 11 GW events in their first two observing runs (O1–O2; The LIGO Scientific Collaboration et al. 2018), including 10 binary black holes (BBH) mergers as well as the first binary neutron star (BNS) merger, GW170817 (Abbott et al. 2017a). However, identifying an electromagnetic (EM) counterpart presents an observational challenge, as GW events thus far have been localized to  $\approx 16\text{--}1650\text{ deg}^2$  (90% confidence; The LIGO Scientific Collaboration et al. 2018), often requiring wide-field imagers to cover a meaningful fraction of the localization regions for photometric discovery.

Two primary approaches have been taken to identify optical counterparts to GW events: “galaxy-targeted” searches that focus on plausible galaxies within the GW localization regions (e.g., Gehrels et al. 2016), and wide-field searches that cover more substantial areas on the sky and are relatively agnostic to the distribution of stellar mass within a GW localization. GW170817 was localized to  $\approx 30\text{ deg}^2$  from the GW signal alone (Abbott et al. 2017a) at the time of the initial counterpart searches, and both wide-field and galaxy-targeted strategies proved fruitful for the discovery of the optical counterpart (e.g., Arcavi et al. 2017a; Coulter et al. 2017; Lipunov et al. 2017; Tanvir et al. 2017; Soares-Santos et al. 2017; Valenti et al. 2017). Looking forward, the median localization of BNS mergers for the third LVC observing run (“O3”) is predicted to be  $\approx 120\text{--}180\text{ deg}^2$  for events detected by all three LIGO/Virgo detectors (Abbott et al. 2016a). Moreover, most BNS mergers are expected to be detected at distances of  $\gtrsim 100$  Mpc, where galaxy catalogs are incomplete (White et al. 2011; Dálya et al. 2018), motivating dedicated wide-field searches to discover optical counterparts.

In this paper, we describe a telescope network brought online in LVC’s O3 dedicated to optical counterpart discovery and follow-up of GW events: Searches After Gravitational-waves Using Arizona Observatories (SAGUARO). In Section 2 we provide an overview of SAGUARO’s scope and telescopic resources. In Section 3 we describe our wide-field photometric counterpart search, our automated pipeline for transient discovery, our database for candidate visualization, and our current status. In Section 4 we describe our resources and methods for spectroscopic classification of candidates and concentrated follow-up of true EM counterparts. In Section 5 we present results from the first three SAGUARO searches following the GW events S190408an, S190425z, and S190426c as proof-of-concept studies. In Section 6 we summarize and discuss future prospects.

Unless otherwise stated, all magnitudes reported here are in *Gaia* G-band and are converted to the AB system via  $m_{\text{AB}} = m_{\text{Gaia}} + 0.125$  (Maíz Apellániz & Weiler 2018).

## 2. SAGUARO Overview and Scientific Scope

The SAGUARO GW follow-up program has two distinct but intertwined components: (1) a wide-field optical search for EM counterparts utilizing the Steward Observatory 1.5 m Mt. Lemmon telescope and its  $5\text{ deg}^2$  imager; (2) a comprehensive optical and near-infrared (NIR) follow-up program composed largely of Steward Observatory telescopes, but also including a

few programs outside of Arizona. We detail these components in Sections 3 and 4, respectively.

The search component of SAGUARO utilizes the existing infrastructure and personnel of the Catalina Sky Survey (CSS; Christensen et al. 2018) to respond in real time to GW events of interest. Given the  $5\text{ deg}^2$  field of view (FOV) of the imager, we employ a wide-field search strategy that directly tiles the GW localization region, similar to that of other groups with access to wide-field facilities (e.g., Abbott et al. 2016b; Kasliwal et al. 2016; Smartt et al. 2016; Soares-Santos et al. 2017; Goldstein et al. 2019), rather than a galaxy-targeted approach (e.g., Gehrels et al. 2016; Arcavi et al. 2017b; Yang et al. 2019).

Once viable EM counterpart candidates are discovered and vetted, SAGUARO has direct access to several optical/NIR follow-up telescopes with apertures ranging from 1.5 to 10 m, and target-of-opportunity (ToO) programs to enable rapid imaging and spectroscopic follow-up. We detail these facilities further in Section 4 and demonstrate that detecting kilonova emission out to  $\sim 200$  Mpc and beyond is feasible within the SAGUARO framework. From these measurements we can constrain properties such as the composition, mass, and velocity of ejected material (e.g., Barnes & Kasen 2013; Chornock et al. 2017; Metzger 2017; Pian et al. 2017). Of particular interest is the direct constraint on the production of heavy elements that the ejected mass, together with the merger rates, can provide.

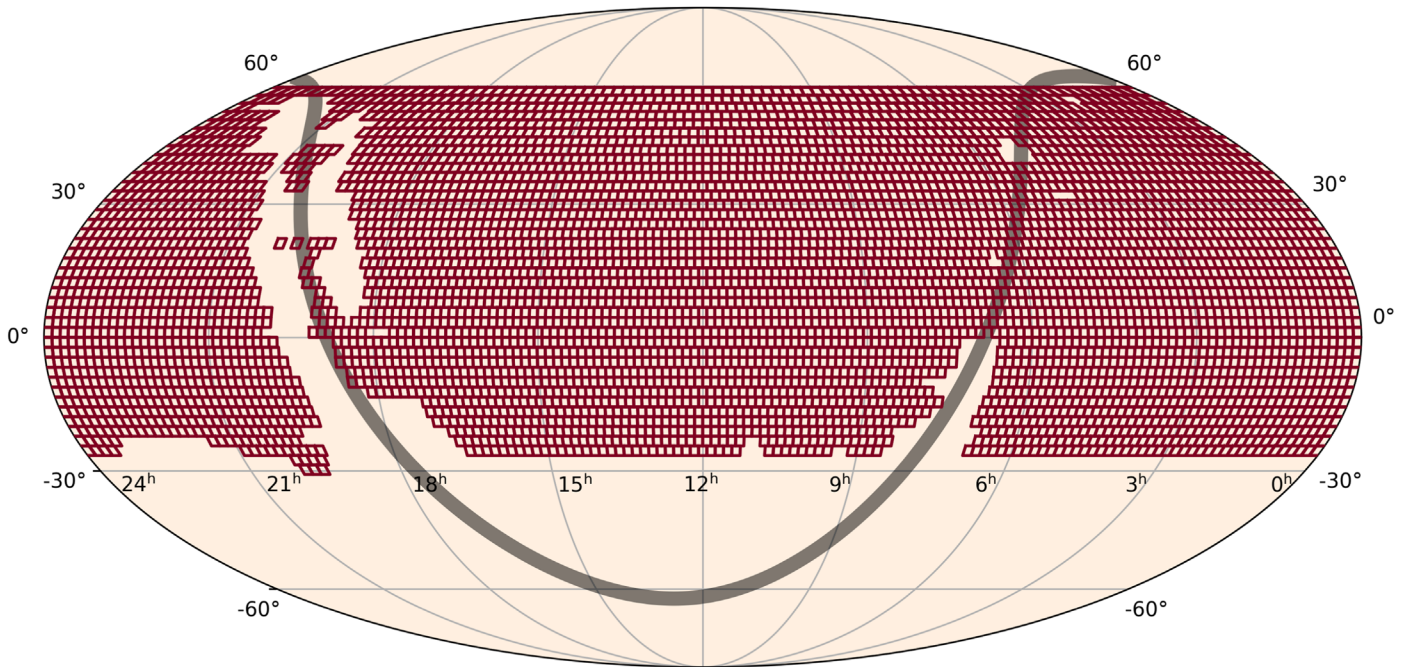
The final component of SAGUARO is to characterize the galactic environments of compact object mergers, which has proved fruitful in constraining the formation histories of the progenitor systems of GW170817 (Abbott et al. 2017b; Blanchard et al. 2017; Levan et al. 2017; Pan et al. 2017) and cosmological short-duration  $\gamma$ -ray bursts (SGRBs) (Fong et al. 2013). For a given GW event, once a single optical counterpart is found, SAGUARO will utilize multi-band optical/NIR photometry and spectroscopy of the host galaxy to enable inferences on the global stellar population properties (e.g., stellar mass, star formation rate, stellar population age, star formation history), and spatially resolved spectroscopy, which can constrain properties of the preferred merger sites of NS binaries and provide filtering for potential hosts in galaxy-targeted searches.

SAGUARO is active for O3 and beyond in order to address outstanding questions concerning the physics and emission mechanisms of these novel, multi-messenger cosmic explosions (e.g., Metzger 2017, for a review).

## 3. Optical Counterpart Search and Data Flow

The primary search capability for SAGUARO utilizes the wide-field imaging of CSS, a near-Earth object (NEO) and potentially hazardous asteroids (PHA) discovery and characterization program. We briefly describe the relevant aspects here.

While CSS utilizes several telescopes, we are currently using the Steward Observatory 1.5 m Mt. Lemmon telescope for our EM counterpart discovery program. The telescope is equipped with a prime focus imager and a  $10.5K \times 10.5K$  CCD ( $0''.77$  per pixel), resulting in a  $5\text{ deg}^2$  FOV. It is operated with  $2 \times 2$  binning for an effective plate scale of  $1''.54$  per pixel. In order to discover NEOs and PHAs, CSS visits fields four times in a  $\sim 30$  minute time span to identify moving objects. With 30 s exposures and typical overheads of several seconds, CSS observes 12 fields, covering  $60\text{ deg}^2$ , in such a 30 minute set.



**Figure 1.** All-sky projection of the CSS survey coverage. Each square represents a  $5.0 \text{ deg}^2$  CSS field for which we have a template image. We have templates for 5069 fields covering  $25345 \text{ deg}^2$ . The Galactic plane is indicated by the shaded line. Crowded regions near the Galactic plane are avoided, resulting in the two bands of missing templates around R.A.  $\approx 7 \text{ hr}$  and  $\approx 19 \text{ hr}$ .

All images are taken without a filter, and the typical  $3\sigma$  image depth of a  $4 \times 30 \text{ s}$  set of median-combined images is  $G \approx 21.3 \text{ mag}$ , calibrated to *Gaia* DR2 (Gaia Collaboration et al. 2018).

CSS observes fixed fields on the sky, between  $-25 \text{ deg}$  and  $+60 \text{ deg}$  in decl., while avoiding crowded regions in the Galactic plane (see Figure 1). The team observes  $\sim 24$  nights per month, avoiding the period around full moon (our GW counterpart search is also not operable during this time period). Once an appropriate GW is announced (see the trigger criterion below), the CSS team will observe a  $60$  (or  $120$ )  $\text{deg}^2$  set of images within the localization region, taking the same sequence of four images as is done for their standard NEO search.

In the following subsections we discuss the logistics of triggering our CSS search when a GW event is announced, and our real-time pipeline for difference imaging and transient detection. We end the section by discussing the current status of this wide-field GW search program.

### 3.1. Triggering CSS

The SAGUARO software suite ingests the VOEvents distributed by the NASA Gamma-Ray Coordinates Network (GCN)<sup>30</sup> system in real time. These alerts are employed by the LVC for disseminating GW event information, including the HEALPIX localization maps with distance constraints (e.g., Singer et al. 2016; Singer & Price 2016). The alert contents are described in the LIGO/Virgo Public Alerts User Guide<sup>31</sup> and contain the classification probabilities for each GW event, which are split into five categories (see Kapadia et al. 2019, for more details): (1) terrestrial (not of astrophysical origin), (2) BNS (both components are neutron stars,  $1 < M < 3 M_{\odot}$ ),

(3) MassGap (any component has a mass in the gap between neutron stars and black holes,  $3 < M < 5 M_{\odot}$ ), (4) NSBH (one component is a neutron star,  $1 < M < 3 M_{\odot}$  and one is a black hole  $M > 5 M_{\odot}$ ), and (5) BBH (both components are black holes,  $M > 5 M_{\odot}$ ). The alerts also contain two parameters, HasNS and HasRemnant, that indicate the likelihood that the event produces EM emission. HasNS indicates the probability that one of the components was a neutron star and HasRemnant indicates the probability that some material remained outside the final remnant compact object, as calculated by the Foucart et al. (2018) model.

Once an alert is received, our CSS search is automatically triggered if the classification parameters exceed our limits for triggering, the false alarm rate is better than our requirement, and the target is observable by CSS. We require that the classification for the GW event have a combined BNS, NSBH, and MassGap probability greater than 20% and a false alarm rate  $< 12 \text{ yr}^{-1}$  in order to trigger. The GW event is determined to be observable if any of the CSS fields within the 90% probability region meet the following constraints: (1) airmass  $< 2.5$ , (2) the projected distance on the sky to the Moon,  $d_{\text{moon}}$ , is governed by  $d_{\text{moon}} > (42 \times \theta_{\text{illum}} + 3) \text{ deg}$ , such that the  $d_{\text{moon}}$  limit increases with the moon illumination  $\theta_{\text{illum}}$  (represented by a fractional number going from 0 for new to 1 for full), (3) Sun altitude  $< -12 \text{ deg}$ . The exception to this was the first event of the LIGO/Virgo O3 run, S190408an, which was used as a full system test even though it was a clear BBH (see Section 5).

Once it is determined that a GW event meets our criteria for triggering, the SAGUARO software automatically inserts a selection of up to 12 fields ( $60 \text{ deg}^2$ ) into the CSS observing queue with the option of manually triggering an additional 12 fields. These fields are selected to cover the highest-probability regions that are observable and for which we have template images. They are given a higher priority level that allows them

<sup>30</sup> <https://gcn.gsfc.nasa.gov/lvc.html>

<sup>31</sup> <https://emfollow.docs.ligo.org/userguide/index.html>

to be observed immediately after the current CSS sequence is finished.

### 3.2. CSS Discovery Data

Once all four images of a field have been taken, basic processing including bias subtraction and flat-fielding are performed. Astrometric and photometric calibrations are then done with SCAMP (Bertin 2006, 2010a) using *Gaia* DR2, resulting in a typical standard deviation of  $\sim 0''.11$  and  $\sim 0.19$  mag for the astrometry and zero-point, respectively.

A script watching for new data waits for all four images of a field to arrive before creating a median for that field using SWarp (Bertin 2010b). During the median creation, each image is background-subtracted to remove background variations before median combining. The background value is retained and used for scaling purposes on the median. The creation of medians allows for cleaner images on which we can search for transients, and removes artifacts such as cosmic rays that only appear on a single image. As an image set for a particular field can be separated by  $\sim 30$  minutes, there exists the possibility that not all four images for each field will be observed, due to weather, moon, or Sun constraints—we therefore have built in a time limit for our median creation algorithm to create medians with the available images if all four are not received. A real-time data-processing pipeline, described in more detail in Section 3.4, then processes these median images for transient detection.

### 3.3. Creation of CSS Templates

One of the primary advantages of SAGUARO’s transient discovery is the access to nearly three years of archival data with the current instrumentation, which enable the production of deep templates for image subtraction. We created templates that cover the entire CSS footprint of  $25345 \text{ deg}^2$  (see Figure 1) with a median of  $\sim 60$  individual 30 s images contributing to each template after a series of quality cuts. First, we discard images that have  $< 2000$  detected point sources. This is done to ensure high astrometric precision for the templates. Second, we do not include images that have a sky brightness of  $< 20 \text{ mag arcsec}^{-2}$ . This cut was chosen based on the distribution of measured sky brightness values, and serves to exclude poor-quality data taken in adverse conditions (i.e., clouds or bright moon). Applying these cuts restricts the template creation to high-quality, deep images with a median  $3\sigma$  limiting mag of 23.0 mag. Approximately 27% of the archival data were not included in the template creation. At the two extremes, 5% of the templates were created with more than 90 images per field, while 9% of the templates were only observed once and have  $\leq 4$  images per field. For those fields with poor coverage (e.g., at very high decl. or close to the Galactic plane), no quality cuts were applied and all available images were used to create the template.

### 3.4. Transient Pipeline

SAGUARO makes use of a data-processing pipeline written in Python (K. Paterson et al. 2019, in preparation will discuss the pipeline in detail) and an implementation of the image subtraction method called ZOGY<sup>32</sup> (Zackay et al. 2016).

The data-processing pipeline controls the flow of the data, submitting images for image subtraction and creating detailed

logs for each image. The pipeline also creates a mask for each image by identifying saturated stars and bad pixels. This allows regions with poor subtractions caused by bad pixels and saturated stars to be ignored during the transient detection.

Image subtraction is performed using the new median images and the templates discussed in Section 3.3. The difference image created by the image subtraction is then converted into a significance image, where the value of each pixel is represented by its significance (i.e., a pixel with value 5 will have a signal-to-noise ratio (S/N) of 5). Corrections, such as those for astrometric errors, are applied to the significance image to produce a corrected significance or “Scorr” image (see Zackay et al. 2016 for a detailed description on the products produced). As the significance or S/N is encoded directly in the Scorr image, it provides a direct way to find detections above a set threshold. For SAGUARO, we set the detection threshold on the subtracted images to  $5\sigma$ . Thus, sources with a significance or S/N  $> 5$  on the Scorr image will be flagged as transient candidates. A flux for each detection is obtained through point-spread function (PSF) photometry. The zero-point, calculated through SCAMP (Bertin 2006, 2010a) using *Gaia* DR2, is then used to convert this flux to magnitudes in *Gaia* G-band (roughly covering 330–1050 nm; see Weiler 2018). With the focus on transients, we cross-match detections against stellar sources in the templates to remove variable stars and poor subtractions associated with stars close to saturation. At present, SExtractor’s CLASS\_STAR parameter is used to filter stellar sources (defined as CLASS\_STAR  $> 0.5$ ). The remaining candidates are then loaded into the database for visualization and vetting.

### 3.5. Database and Candidate Visualization

For vetting in real-time, detailed information for each transient candidate is stored in a PostgreSQL database and postage stamp images are saved to disk. A Flask webserver allows visual inspection of candidates as they come in, and accommodates queries based on date, field ID and detection threshold. Candidates are sortable by S/N or machine-learning score (which gives the likelihood of the transients being real) to promote the most likely candidates.

Each candidate is automatically cross-matched against known moving objects from the Minor Planet Center (MPC<sup>33</sup>) and known transients from the Transient Name Server (TNS<sup>34</sup>). We also search for previous detections from the Zwicky Transient Facility (ZTF; Graham et al. 2019) and cross-match against galaxies from the Galaxy List for the Advanced Detector Era (GLADE; Dályá et al. 2018) catalog within the localization volume using a simple broker, the Steward Alerts for Science System (SASSy<sup>35</sup>). This allows for lists of viable candidates to be quickly disseminated to the community through GCN notices within a few hours of taking the data.

### 3.6. Current Status

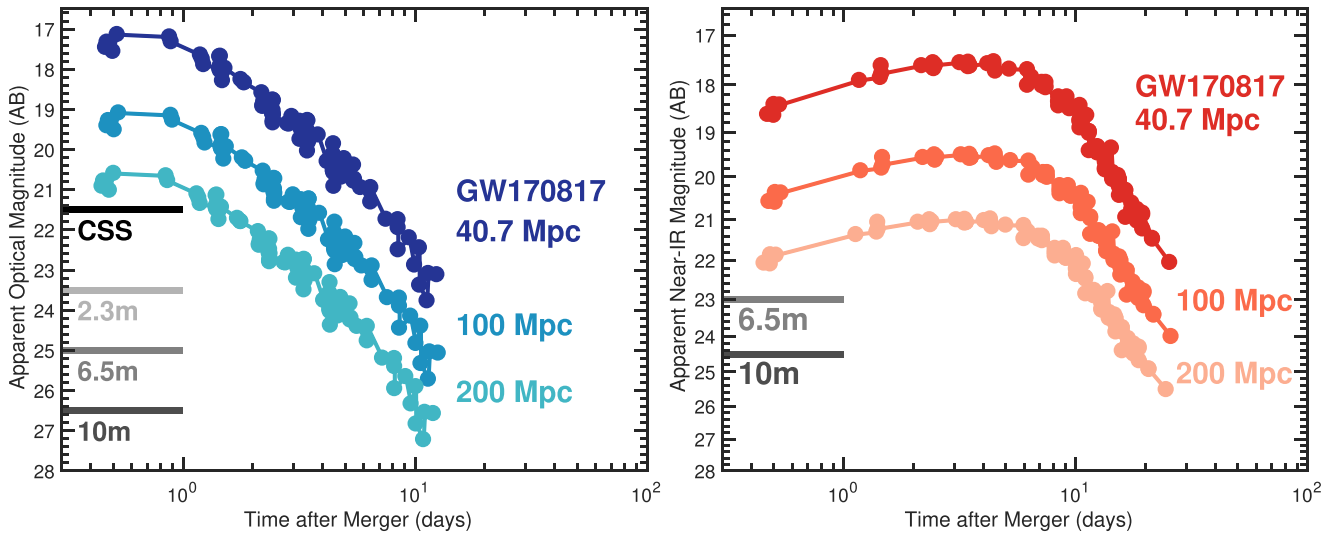
As we show in Section 5, the EM counterpart search portion of SAGUARO is functioning and responding to LVC events in O3. We have also been ingesting all 1.5 m Mt. Lemmon telescope data during routine CSS operations in real time and

<sup>32</sup> <https://github.com/pmvreeswijk/ZOGY>

<sup>33</sup> <https://www.minorplanetcenter.net/iau/mpc.html>

<sup>34</sup> <https://wis-tns.weizmann.ac.il/>

<sup>35</sup> <http://sassy.as.arizona.edu/sassy/ztf/>



**Figure 2.** Optical  $r$ -band (left) and NIR  $K$ -band (right) light curves of the  $r$ -process kilonova following the NS-NS merger GW170817 (compiled in Villar et al. 2017), at the distance of the host galaxy,  $\approx 40.7$  Mpc (Cantiello et al. 2018). Also shown are the light curves of GW170817, shifted to 100 Mpc, and 200 Mpc (the expected range for a face-on BNS merger at design sensitivity). The typical limit of our initial CSS search,  $G \approx 21.3$  mag, is denoted by the horizontal black line. Also shown are typical  $3\sigma$  limits for 30 minutes on-source, representing the wide range of photometric follow-up resources within SAGUARO (horizontal grayscale lines). A comparison of the scaled GW170817 light curves to depths achieved by facilities in SAGUARO demonstrates that we will be able to efficiently detect and photometrically characterize kilonovae of similar luminosity to GW170817 to 200 Mpc in both the optical and NIR bands.

searching for transients (e.g., Lundquist et al. 2019), independent of the main GW follow-up program. At the moment, the primary purpose of this wide-area search is to stress test our GW search pipeline, and gather a sufficient training set to improve our machine-learning algorithm for transient vetting.

SAGUARO’s wide-field CSS search reaches a limiting magnitude of  $G \approx 21.3$  mag. In Figure 2, we show the optical  $r$ -band and NIR  $K$ -band light curves for AT2017gfo, the optical counterpart of GW170817, (compiled in Villar et al. 2017; data from Andreoni et al. 2017; Arcavi et al. 2017a; Coulter et al. 2017; Cowperthwaite et al. 2017; Díaz et al. 2017; Drout et al. 2017; Kasliwal et al. 2017; Lipunov et al. 2017; Pian et al. 2017; Pozanenko et al. 2017; Smartt et al. 2017; Tanvir et al. 2017; Troja et al. 2017; Utsumi et al. 2017; Valenti et al. 2017) for three distances:  $\approx 40.7$  Mpc, the distance of GW170817 (Cantiello et al. 2018), 100 Mpc, the typical expected distance for a BNS merger for LVC’s O3, and 200 Mpc, the expected range for a face-on BNS merger at design sensitivity (Abbott et al. 2016a). Matched to SAGUARO’s current discovery limits, our optical search maintains sensitivity to kilonovae of comparable luminosity to GW170817 out to 200 Mpc at  $\delta t \lesssim 1$  day. Once a promising kilonova candidate is identified, SAGUARO’s follow-up efforts on larger aperture facilities (described in subsequent sections) will be employed to track the counterpart’s temporal evolution. Indeed, it is the combined discovery and follow-up endeavor, the template coverage, and the extension to NIR wavelengths, that give SAGUARO an advantage in GW counterpart efforts.

In the Northern Hemisphere, there are only a few optical  $>1 \text{ deg}^2$  wide-field efforts underway to search for optical counterparts to GW events. This includes efforts by Pan-STARRS (Chambers et al. 2016), ZTF (Graham et al. 2019), and ATLAS (Tonry et al. 2018). All three facilities are conducting optical counterpart searches following GW events in addition to their primary surveys. Among these searches, the SAGUARO discovery effort is most comparable to Pan-STARRS, which has a 1.8 m aperture and  $7 \text{ deg}^2$  FOV. The

discovery components of ZTF and ATLAS are  $\approx 1\text{--}2$  mag less sensitive, but both possess a FOV that is a factor of  $\approx 6\text{--}7$  times larger than SAGUARO/CSS.

#### 4. EM Counterpart Follow-up

The primary facilities used by SAGUARO are those of Steward Observatory, which has significant access to optical and NIR telescopes, most of which can contribute to the follow-up of EM counterparts. A rapid ToO program is in place to ensure timely observations in all counterpart scenarios, and our team will have access to telescopes of all relevant apertures on a given night. Given the excitement of the burgeoning field of multi-messenger astronomy, many of the primary telescope users in the Steward community have joined the SAGUARO follow-up proposal to help facilitate rapid and persistent follow-up of any EM counterparts identified in O3. In addition to Steward resources, we also have Keck telescope access for ToO follow-up.

##### 4.1. Spectroscopic Candidate Vetting

When GW localizations cover  $\sim 100\text{--}1000 \text{ s deg}^2$ , potentially dozens of candidate counterparts will be uncovered, as was the case for the first two potential neutron star mergers of O3, S190425z, and S190426c (see, e.g., the summary of these events in Hosseinzadeh et al. 2019). While this large number of candidates can be winnowed down by making cuts on the transients’ age, color, and association with galaxies at the appropriate distance, ultimately spectroscopic vetting must be done to uncover the true EM counterpart.

SAGUARO is committed to spectroscopic candidate vetting for very promising targets that are confirmed to have no detection before the GW event. Candidates from all programs, including our own Mt. Lemmon 1.5 m search, will be considered equally. When distance information is available, we prioritize targets that are localized near cataloged galaxies (e.g., Dálya et al. 2018) with distances consistent with that

**Table 1**  
Summary of SAGUARO Follow-up

Event	Type <sup>b</sup>	$\delta t$ (hr)	$3\sigma$ Limit <sup>a</sup> (AB Mag)	Area Covered			Probability Covered		
				50% (deg <sup>2</sup> )	90% (deg <sup>2</sup> )	Total (deg <sup>2</sup> )	50% (%)	90% (%)	Total (%)
S190408an	BBH	17.56	19.8	8.6	13.5	15.0	13.8	8.6	7.8
S190425z	BNS	1.37	21.3	58.5	60.0	60.0	6.0	3.4	3.0
S190426c	NSBH	41.76	20.8	13.4	58.9	60.0	4.3	5.6	5.1

**Notes.** Magnitudes reported here are uncorrected for Galactic extinction and are reported in the  $G$ -band. The probability covered refers to the percent of the probability of the 50%, 90%, and total localizations that were covered by these observations.

<sup>a</sup>  $3\sigma$  limiting magnitude calculated from CSS images.

<sup>b</sup> Most likely classification based on GW probabilities (Kapadia et al. 2019).

inferred from the GW signal. Candidate vetting is a dynamic process that benefits from real-time access to large aperture telescopes, as was the case for our team’s vetting of PS19qp/SN2019ebq (Smith et al. 2019), which an initial spectrum suggested was consistent with a kilonova at the distance to S190425z (Nicholl et al. 2019a); we detail these observations further in Section 5.2.

#### 4.2. Photometric and Spectroscopic Monitoring

Once a true GW counterpart is discovered, SAGUARO will spring into action to collect high-cadence optical and NIR light curves as well as spectral sequences while the transient is accessible to ground-based observatories.

First, in the small to medium aperture range are the 1.5 m Kuiper, 1.8 m VATT and 2.3 m Bok telescopes, all of which are based in Southern Arizona. All three telescopes have imagers that can gather data on kilonovae, VATT and Bok have spectrographs, and Kuiper and Bok have access to SPOL, an imager/spectropolarimeter (Schmidt et al. 1992). For instance, in  $\sim 1$  hr exposure times the Bok B&C spectrograph can get high S/N spectra down to  $\sim 19$  mag; GW170817/AT2017gfo was brighter than 19 mag for  $\sim 2$  days. Similarly, the 90Prime 1 deg<sup>2</sup> camera (Williams et al. 2004) on the Bok telescope can image down to  $\sim 24$  mag in  $\sim 30$  minute exposures, facilitating kilonova optical light-curve follow-up for a week or more in the nearest events (Figure 2).

SAGUARO also has access to large aperture facilities: the 6.5 m MMT, the twin 6.5 m *Magellan* telescopes, the  $2 \times 8.4$  m Large Binocular Telescope, and the two Keck 10 m telescopes. The spectral sequences that these facilities can provide will lend insight into the emission mechanisms of neutron star mergers and  $r$ -process element production. Additionally, all of these large aperture facilities will be used to obtain late-time light curves once any counterpart is too faint for spectroscopy, potentially down to  $\sim 26.5$  mag in the optical and  $\sim 24.5$  mag in the NIR. These same large aperture facilities will be used to study the host properties of the EM counterparts to GW events, as was briefly discussed in Section 2.

## 5. SAGUARO Observations of GW Events

The SAGUARO Mt. Lemmon 1.5 m search program has been activated three times thus far during O3, including the first event of the run, S190408an, a clear BBH merger, and two events that likely had a neutron star, S190425z and S190426c. A summary of the follow-up observations can be seen in Table 1. In Figures 3, 4, and 7, respectively, we present each

localization and our SAGUARO pointings and further describe each trigger below.

### 5.1. S190408an

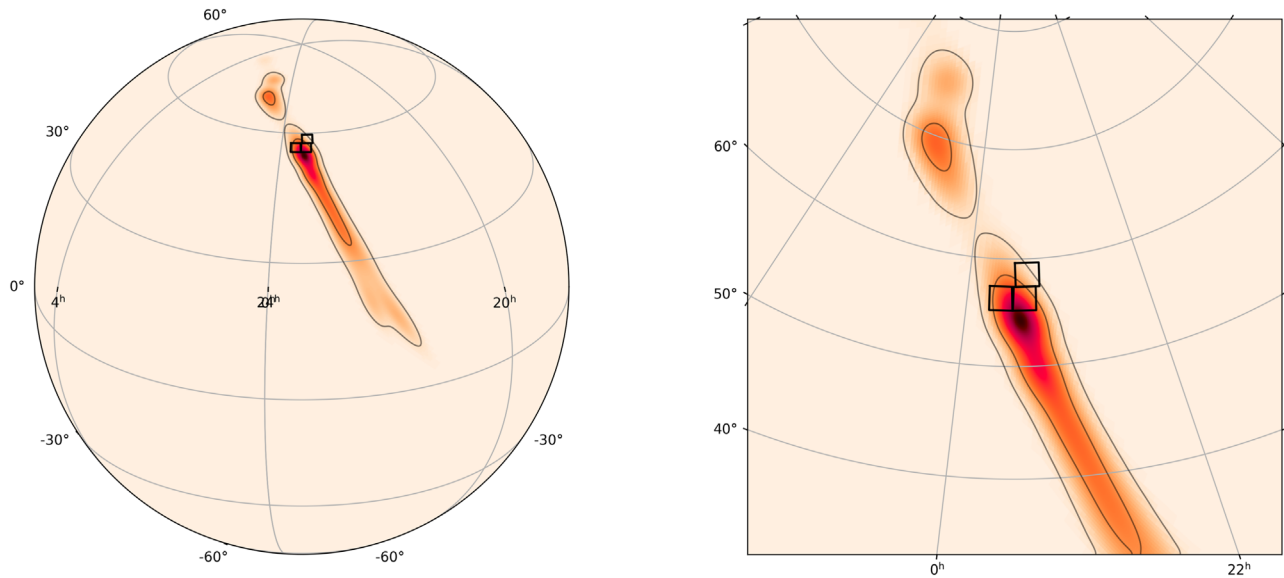
A candidate GW signal was identified using data from LIGO Livingston Observatory (L1), LIGO Hanford Observatory (L2), and Virgo Observatory (V1) on 2019 April 8 at 18:18:02.288 UTC (Ligo Scientific Collaboration & VIRGO Collaboration 2019a). This event, S190408an, had a  $>99\%$  probability of being a BBH merger. The localization covered 387 deg<sup>2</sup> at a distance of  $1473 \pm 358$  Mpc. S190408an is the first publicly announced astrophysical event in LVC’s O3 and the entire localization region resides in the Northern Hemisphere (Figure 3), making it a prime target for SAGUARO’s first trigger as an important test of the system.

The majority of the localization lies in an area not covered by the CSS survey due to its proximity to the Galactic plane. As a result, we only triggered three viable fields with template images. The localization was not immediately observable and the images were taken at a mid-time of  $\delta t \approx 17.56$  hr after the GW event. As shown in Figure 3, these fields covered 8.63 deg<sup>2</sup> of the 50% probability region and 13.45 deg<sup>2</sup> of the 90% probability region. These observations account for 13.8% of the 50% probability, 8.6% of the 90% probability, and 7.8% of the total probability. Poor weather conditions and the low elevation of the fields resulted in a  $3\sigma$  limiting magnitude of 19.8 mag. The details of these observations are summarized in Table 1.

From these 3 fields, 5469 candidates above  $5\sigma$  were detected. No known moving objects or transients were found in the median images after cross-matching these candidates against known moving objects from the MPC and known transients from TNS. Cross-matching to Toba et al. (2014) and Krawczyk et al. (2013) for known active galactic nuclei (AGNs) also found no matches. As generally expected for BBH mergers, no real astrophysical source associated with the GW event was found after candidate vetting.

### 5.2. S190425z

A candidate GW signal was identified using data from L1 and V1 on 2019 April 25 at 08:18:05.017 UTC (Ligo Scientific Collaboration & VIRGO Collaboration 2019b). This event, S190425z, had a  $>99\%$  probability of resulting from a BNS merger. The initial 90% localization covered 10183 deg<sup>2</sup> at a distance of  $155 \pm 45$  Mpc. The 90% localization area was later improved to 7461 deg<sup>2</sup> at a distance of  $156 \pm 41$  Mpc (Ligo Scientific Collaboration & VIRGO Collaboration 2019c). It is



**Figure 3.** GW localization of S190408an overlaid with the three CSS fields that were triggered; for this event, we were limited by the number of CSS template fields available near the Galactic plane. The 90% localization covered  $387 \text{ deg}^2$  at a distance of  $1473 \pm 358 \text{ Mpc}$ . The localization is a probability density map where darker colors indicate a higher probability of containing the GW source. Contours indicate the 50% and 90% confidence levels for containing the GW event.

notable that S190425z was detected as a sub-threshold event in V1, and thus is considered a single detector event, explaining its large localization area with respect to the expected median value for O3.

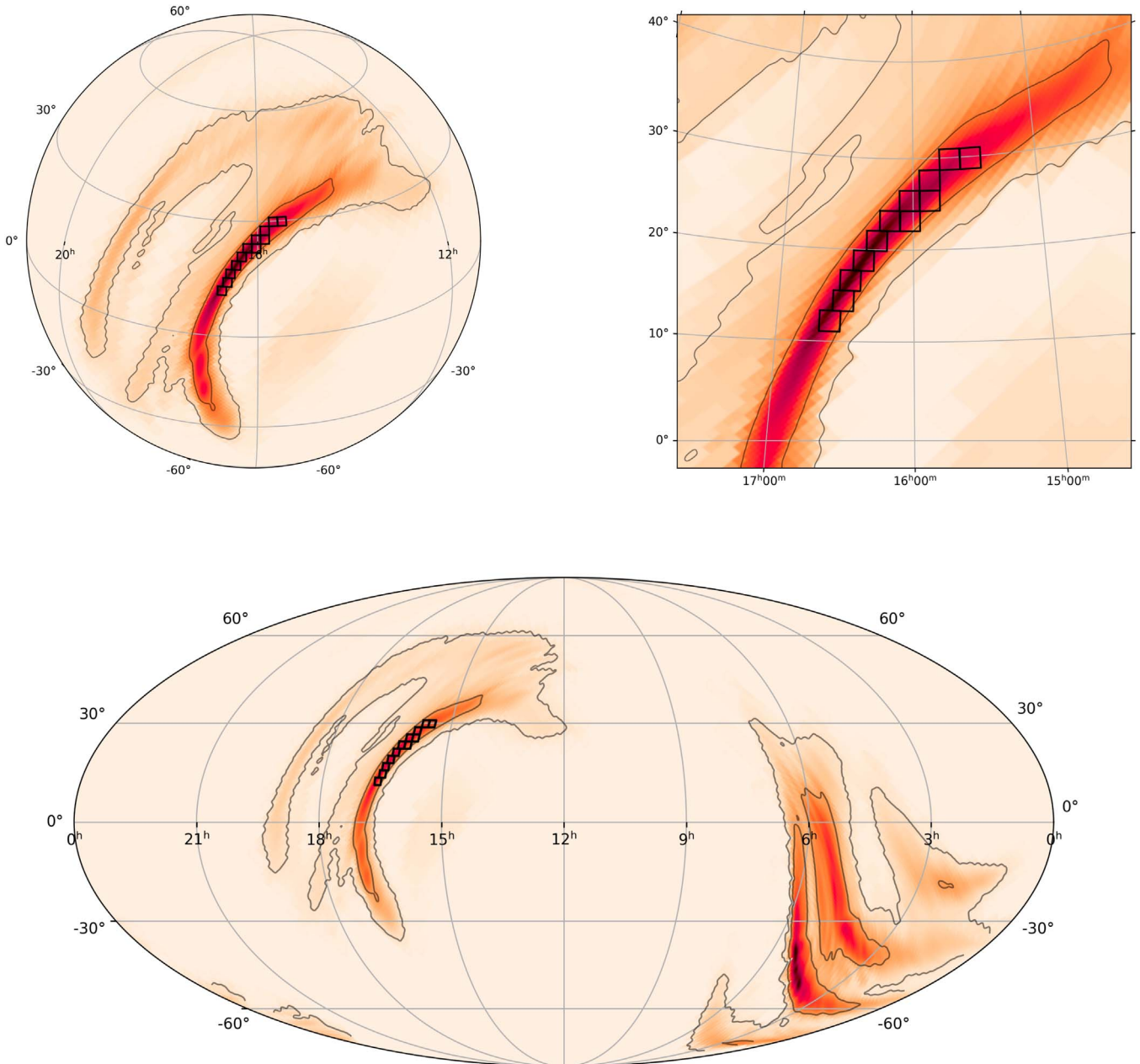
Once the initial alert was received, the SAGUARO software automatically selected the 12 highest-probability fields to observe and placed these into the CSS queue. As Figure 4 shows, the localization has three distinct regions of high probability. Two of these regions are mostly visible from the southern hemisphere and one region is mostly visible in the north; the 12 selected fields were naturally in the northern region. These fields covered  $58.5 \text{ deg}^2$  of the 50% probability region and  $60.0 \text{ deg}^2$  of the 90% probability region. These fields accounted for 6.0% of the 50% probability, 3.4% of the 90% probability, and 3.0% of the total probability after the localization was updated (Table 1).

The observations of the fields started at  $\delta t \approx 1.1 \text{ hr}$  with respect to the GW event,  $\sim 0.4 \text{ hr}$  after it was added to the CSS observing queue, with a mid-time of  $\delta t \approx 1.37 \text{ hr}$  for all 12 fields. In favorable observing conditions, we reached a  $3\sigma$  limiting magnitude of 21.3 mag. From the 12 fields observed, 2711 candidates above  $5\sigma$  were detected. After cross-matching these candidates against known moving objects from the MPC, two known moving objects were found to have remained in the median-combined images. After cross-matching to the TNS, six previously discovered transients were found within the data: AT 2019bln (Tonry et al. 2019), SN 2017firl (Tonry et al. 2017; Khakaj et al. 2017), AT 2019eaj (Fremling 2019), AT 2018cix (Fremling 2018), SN 2019aja (Stanek 2019), and SN 2019bzo (Brinnel et al. 2019; Nordin et al. 2019). Figure 5 shows an example of one such transient found. Further cross-matching to Toba et al. 2014 and Krawczyk et al. 2013 found 45 known AGNs associated with detections. Four candidates were found within the data: SN 2019eff (Chambers et al. 2019a), AT 2019efu (Chambers et al. 2019a), AT 2019ech (Chambers et al. 2019b), and AT 2019fgy (Chambers et al. 2019c). Only one candidate, SN 2019eff, was associated with a GLADE galaxy, but at a distance inconsistent with the reported range for the GW event. Spectral classification of SN 2019eff by Nicholl et al. (2019b) indicated a

type IIb supernova. The remaining candidates were not followed up by any group.

As the follow-up of S190425z developed, 69 GW counterpart candidates were reported in GCNs (Hosseinzadeh et al. 2019). One GW counterpart candidate reported by Pan-STARRS, PS19qp/SN2019ebq (Smith et al. 2019), appeared to be a promising kilonova candidate. An initial spectrum from the advanced Public ESO Spectroscopic Survey for Transient Objects (PESSO) displayed a red, featureless continuum and narrow host lines at a redshift  $z = 0.037$  (Nicholl et al. 2019a). This redshift corresponds to a distance consistent with the GW event ( $D \approx 150 \text{ Mpc}$ ), and gave the transient an absolute magnitude of  $M_i \approx -16.7 \text{ mag}$  (corrected for Galactic extinction Schlafly & Finkbeiner 2011), roughly that of GW170817 at similar epochs. This candidate was not covered by the CSS fields triggered, but we were motivated by the distance, luminosity, and featureless spectrum seen by PESSO, to trigger ToO imaging and spectroscopy on the LBT starting at  $\delta t \approx 1.11 \text{ days}$  after the GW trigger. The transient is well detected in the 60 s  $r$ -band acquisition image (Figure 6). Performing astrometry relative to *Gaia* DR2, we measure a location of R.A. =  $17^{\text{h}}01^{\text{m}}18^{\text{s}}35$ , decl. =  $-07^{\circ}00'10.5''$  with a positional uncertainty of  $0''.060$  ( $1\sigma$ ). Using standard tasks in IRAF, we measure a brightness for PS19qp/SN2019ebq of  $r = 20.44 \pm 0.05 \text{ mag}$ , translating to  $M_r \approx -15.59 \text{ mag}$  at  $z = 0.037$  (or  $M_r \approx -16.91$  when accounting for the Galactic extinction in the direction of PS19qp/SN2019ebq of  $A_r = 1.313 \text{ mag}$ ; Schlafly & Finkbeiner 2011).

We obtained  $2 \times 600 \text{ s}$  exposures of PS19qp/SN2019ebq at 2019 April 26 11:00 UT using the Multi-Object Double Spectrographs (MODS; Pogge et al. 2010) and a  $1''.2$  slit. Here we focus on the red-side spectrum, which spanned a usable range of  $\sim 5650\text{--}9200 \text{ \AA}$ , and can be seen in Figure 6; note that we have corrected for Milky Way extinction, with a color excess of  $E(B - V) = 0.5 \text{ mag}$  (Schlafly & Finkbeiner 2011). Two broad absorption features are apparent, at  $\approx 7500 \text{ \AA}$  and  $8200 \text{ \AA}$ , likely due to O I  $\lambda 7774$  and the Ca II IR triplet, respectively—these spectroscopic signatures are a clear sign that PS19qp/SN2019ebq is a normal supernova. Spectral classification with the Supernova



**Figure 4.** Same as Figure 3, but for S190425z. The 90% localization area covered  $7461 \text{ deg}^2$  at a distance of  $156 \pm 41 \text{ Mpc}$ . It was concentrated in two regions, one predominantly north of the celestial equator near R.A.  $\approx 16 \text{ hr}$  and one mostly south near R.A.  $\approx 5 \text{ hr}$ . A full Mollweide projection is also shown (bottom) to illustrate the full sky localization.

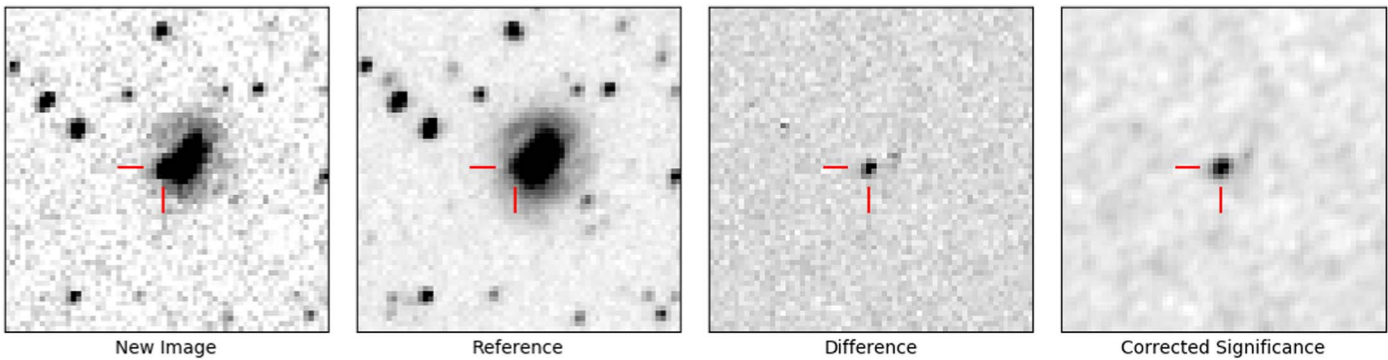
Identification (SNID; Blondin & Tonry 2007) software package indicates a type Ib/c supernova after maximum light; we plot a +15 day spectrum of SN2004aw (Taubenberger et al. 2006), a type Ic, in Figure 6 to show that this classification is reasonable. We also show a spectrum of AT2017gfo, the optical counterpart of GW170817, at +1.4 days after the GW170817 merger (Smartt et al. 2017; Valenti et al. 2017), clearly showing that PS19qp/SN2019ebq is an unrelated supernova (see also Carini et al. 2019; Dimitriadis et al. 2019; Jenson et al. 2019; McCully et al. 2019; Morokuma et al. 2019).

### 5.3. S190426c

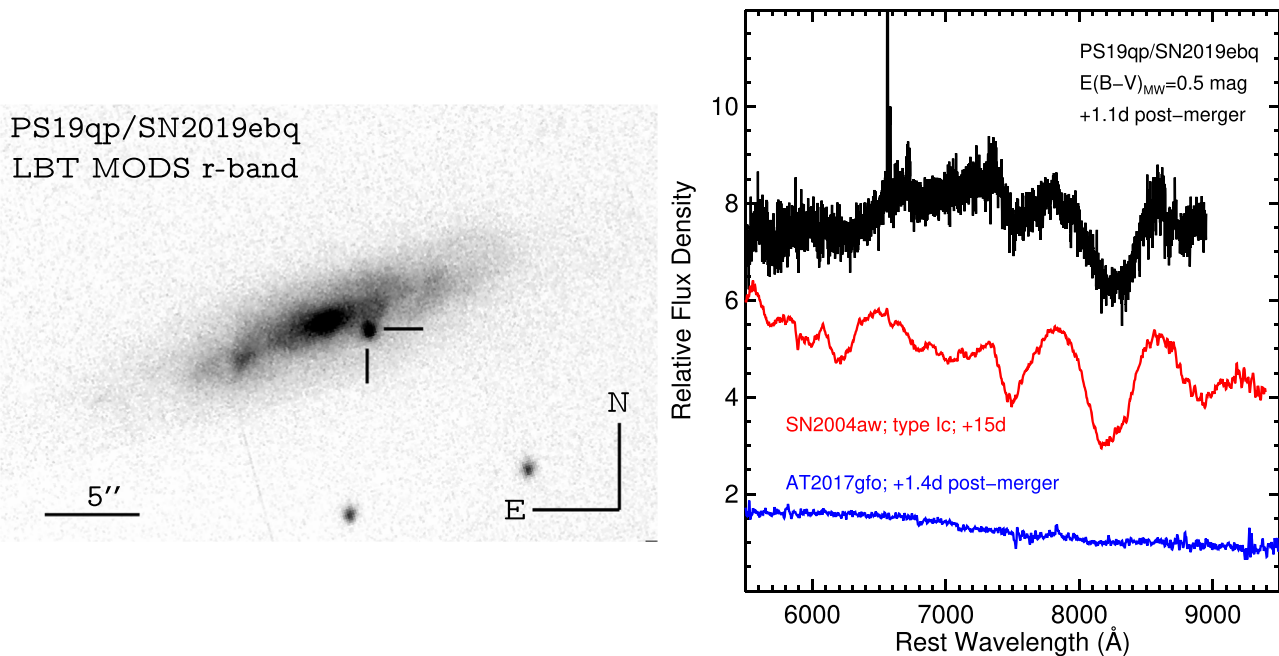
A candidate GW signal was identified using data from L1, L2, and V1 on 2019 April 26 at 15:21:55.337 UTC. This candidate,

S190426c, initially had a 49.3% probability of resulting from a BNS merger, a 23.7% probability of being a MassGap event, a 12.9% probability of resulting from a NSBH merger, a 0.0% probability of being a BBH merger, and a 14.0% probability of being of terrestrial origin (Ligo Scientific Collaboration & VIRGO Collaboration 2019d). The source classification was later significantly revised to a 51.6% probability of being a NSBH merger, 21.5% probability of being a MassGap event, and a 12.9% probability of being a BNS merger, with the BBH and terrestrial probabilities unchanged (Ligo Scientific Collaboration & VIRGO Collaboration 2019e). The distance of the event was also updated to  $377 \pm 100 \text{ Mpc}$  with the 50% probability region covering  $214 \text{ deg}^2$  and the 90% probability region covering  $1131 \text{ deg}^2$ .





**Figure 5.** CSS imaging of AT 2019bln, a known transient found within the data for the S190425z event. Left: the new image created from the median of the four CSS images with a mid-time of 2019 April 25 09:35:48.12 UTC and  $\delta t \approx 1.29$  hr after the GW event. Second: the reference image from the deep templates created with 62 30 s images, giving a total exposure time of 31 minutes. Third: the difference image produced by the image subtraction. Right: corrected significance (Scorr) image showing the significance of the detection in the difference image. AT 2019bln was detected with an S/N of 15.



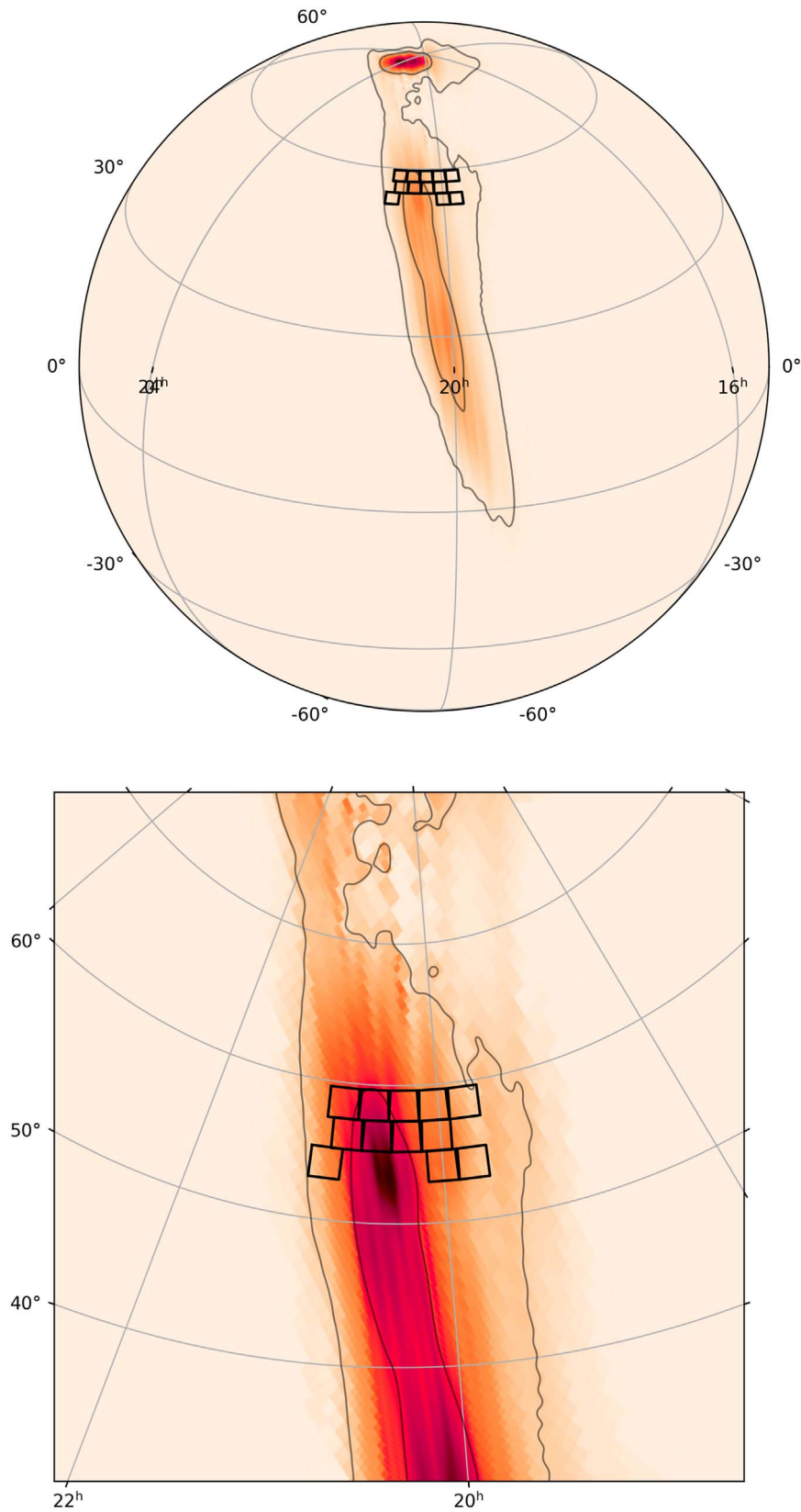
**Figure 6.** Left: LBT/MODS *r*-band imaging of PS19qp/SN2019ebq taken at  $\delta t \approx 1.11$  days after the GW trigger of S190425z. The crosshairs denote the position of the supernova. Right: spectroscopic classification of PS19qp/SN2019ebq using LBT/MODS. This transient was located in the S190425z localization region, with a host galaxy at distance consistent with the GW trigger. For comparison, we show the spectrum of SN2004aw, a type Ic SN +15 days after maximum light (Taubenberger et al. 2006). For comparison, we show the spectrum of AT2017gfo, the optical counterpart of GW170817, at +1.4 days after the GW170817 merger (Smartt et al. 2017; Valenti et al. 2017).

Although a GW170817-like source would not be detectable by our SAGUARO search at this distance, little is known about the expected emission from NSBH mergers. While Setzer et al. (2019) showed that kilonovae from NSBH mergers should be much dimmer than those from BNS mergers when viewed face-on, the mass ejected is expected to be highly anisotropic, making the viewing angle for these mergers important (Kyutoku et al. 2013). Simulations from Rosswog et al. (2017) found that NSBH kilonovae reach similar optical peak brightness to BNS kilonovae, while Tanaka et al. (2014) found that higher ejecta masses could make the kilonovae from NSBH events more luminous than those with BNS mergers. With such a wide range of predictions for the emission from NSBH mergers, follow-up of these sources is crucial to place the first observational constraints on models.

Once the GW alert was received, the 12 fields shown in Figure 7 were selected to be observed. The highest-probability

regions of the localization were either north of our +60 deg decl. limit or fell in an area near the Galactic plane that is not covered by the CSS survey due to crowded fields. As a result, we canceled the initial trigger and triggered the telescope (selecting the same fields from the initial localization) after the localization map was updated (Ligo Scientific Collaboration & VIRGO Collaboration 2019f). These fields were observed at a mid-time of  $\delta t \approx 1.74$  days, covering 13.4 deg<sup>2</sup> of the 50% probability region and 58.9 deg<sup>2</sup> of the 90% probability region. These fields account for 4.3% of the 50% probability, 5.6% of the 90% probability, and 5.1% of the total probability after the localization was updated (e.g., Ligo Scientific Collaboration & VIRGO Collaboration 2019f). A slightly lower elevation and brighter sky resulted in a  $3\sigma$  limiting magnitude of 20.8 mag.

From the triggered fields, 11307 candidates above  $5\sigma$  were detected. No known moving objects, transients, or AGNs



**Figure 7.** Same as Figure 3 for S190426c, showing the updated localization. This event occurred at a distance of  $377 \pm 100$  Mpc. The 50% probability region covered  $214 \text{ deg}^2$  and the 90% probability region covered  $1131 \text{ deg}^2$ . The 12 fields selected to be observed were limited by our  $+60$  deg decl. limit and lack of coverage near the Galactic plane.

were found in the median images after cross-matching these candidates against known moving objects from the MPC, known transients from TNS, and known AGNs (Krawczyk et al. 2013;

Toba et al. 2014). One candidate was found within the data (AT 2019ejj, Delgado et al. 2019) and was not associated with a GLADE galaxy.

## 6. Summary and Future Prospects

We introduce the SAGUARO GW optical counterpart search strategy, where we tile the highest-probability regions of the localization with the Steward Observatory Mt. Lemmon 1.5 m telescope and its 5 deg<sup>2</sup> imager. With this facility we obtain observations covering 60 or 120 deg<sup>2</sup> down to  $\sim 21.3$  mag within  $\delta t \lesssim 30$  minutes of receiving the GW alert if it is observable. We also present the SAGUARO software suite that we utilize to trigger the observations, process the data, and display the candidates for vetting. The robustness of this system allows us to start tiling the localization within minutes of receiving the GW alert and produce lists of candidates within hours.

We discuss SAGUARO’s first results from the optical counterpart searches following three GW events. For S190408an we tiled 15 deg<sup>2</sup> down to a limit of 19.8 mag. For S190425z we tiled 60 deg<sup>2</sup> down to a limit of 21.3 mag. For S190426c we tiled 60 deg<sup>2</sup> down to a limit of 20.8 mag. Across all 3 events we found a total of 19487 candidates. Cross-matching these candidates to catalogs of moving objects, previously reported transients, and AGNs, we were able to detect 2 moving objects, 6 previously found transient and 45 AGNs. After visual inspection, we found five real candidates for the three events. One candidate had a match to a GLADE galaxy, but at the wrong distance and was subsequently classified as a supernova. The remaining candidates were not associated with GLADE galaxies and were not followed up. We also spectroscopically classified a candidate reported by the community within  $\approx 1.1$  days of the GW event.

Given that the median expected localizations for BNS mergers prior to the LVC’s O4 is  $\approx 120\text{--}180$  deg<sup>2</sup> (Abbott et al. 2016a), it will be useful to increase the FOV of our searches in the near future. To this end, we anticipate bringing online additional resources that will complement the existing optical counterpart search of SAGUARO, including the CSS-run Schmidt 0.7 m telescope on Mt. Bigelow in Arizona, which uses a  $10.5K \times 10.5K$  CCD with a 20 deg<sup>2</sup> FOV. With this FOV, these BNS merger localizations could be covered in  $<10$  pointings. Reaching typical depths of  $V \sim 19.5$  in 30 s exposures, this would allow searches for BNS out to  $\sim 100$  Mpc.

Beyond O3, the Kamioka Gravitational Wave Detector (KAGRA; Kagra Collaboration et al. 2019) is expected to join the LVC. LIGO is also expected to undergo a significant upgrade to “A+.”<sup>36</sup> Coupled together, the event rates as well as the fraction of well-localized BNS mergers will increase, with predicted median localizations for BNS mergers of only  $\approx 9\text{--}12$  deg<sup>2</sup> (Abbott et al. 2016a). In order to match the capabilities of future GW detectors and improvements, we will continue to explore opportunities on larger aperture optical and NIR facilities, which will serve as valuable resources for distant, well-localized events.

SAGUARO is able to discover and characterize kilonovae of comparable luminosity to GW170817 out to 200 Mpc on timescales of  $\delta t \lesssim 1$  day, with monitoring capabilities on the timescale of weeks. The ability of software systems to automatically trigger wide-field telescopes, combined with the real-time processing of difference images, is crucial for the rapid detection of kilonova candidates. In this role, SAGUARO represents a significant addition to the search for optical counterparts to GW events.

SAGUARO is supported by the National Science Foundation under awards No. AST-1909358 and AST-1908972. Research by D.J.S. is also supported by NSF grants AST-1821987, AST-1821967, AST-1813708, and AST-1813466. Research by K.P. and W.F. is also supported by NSF Award No. AST-1814782. Research by J.C.W. is supported by NSF AST-1813825. J.S. acknowledges support from the Packard Foundation. E.P. and A.R. acknowledge funding from the GRAvitational Wave Inaf TeAm (GRAWITA). The UCSC team is supported in part by NASA grant NNG17PX03C, NSF grant AST-1518052, the Gordon & Betty Moore Foundation, the Heising-Simons Foundation, and by a fellowship from the David and Lucile Packard Foundation to R.J.F. A.R. acknowledges support from Premiale LBT 2013. This work was partially performed at the Aspen Center for Physics, which is supported by National Science Foundation grant PHY-1607611. This research was supported in part by the National Science Foundation under Grant No. NSF PHY-1748958. A.C. acknowledges support from the National Science Foundation under CAREER award #1455090. A.I.Z. acknowledges support from Data7: UA’s Data Science Institute. M.R.D. acknowledges support from the Dunlap Institute at the University of Toronto and the Canadian Institute for Advanced Research (CIFAR). The operations of the facilities of Steward Observatory are supported in part by the state of Arizona.

The LBT is an international collaboration among institutions in the United States, Italy, and Germany. LBT Corporation partners are: the University of Arizona on behalf of the Arizona Board of Regents; Istituto Nazionale di Astrofisica, Italy; LBT Beteiligungsgesellschaft, Germany, representing the Max-Planck Society, The Leibniz Institute for Astrophysics Potsdam, and Heidelberg University; The Ohio State University, and The Research Corporation, on behalf of The University of Notre Dame, University of Minnesota and University of Virginia.

This research has made use of data and/or services provided by the International Astronomical Union’s Minor Planet Center.









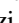

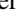

*Facilities:* LBT Consortium Large Binocular Telescope (LBT) at Mount Graham International Observatory, Steward Observatory 1.5 m (60 inch) Telescope (part of the Catalina Sky Survey; CSS) at Mount Lemmon Observing Facility (MLOF), University of Arizona/Smithsonian Institution 6.5 m MMT Telescope at Fred Lawrence Whipple Observatory (FLWO), Steward Observatory 2.3 m (90 inch) Bart Bok Telescope at Kitt Peak National Observatory (KPNO), California Association for Research in Astronomy 10 m W. M. Keck I Telescope at Maunakea Observatory, California Association for Research in Astronomy 10 m W.M. Keck II Telescope at Maunakea Observatory, Steward Observatory 1.54 m (61 inch) Kuiper Telescope (formerly NASA telescope) at Catalina Station, Vatican Observatory Research Group 1.8 m Alice P. Lennon Vatican Advanced Technology Telescope (VATT) at Mount Graham International Observatory, Carnegie Institution for Science (CIS) 6.5 m Landon Clay Telescope at Las Campanas Observatory (LCO), Carnegie Institution for Science (CIS) 6.5 m Walter Baade Telescope at Las Campanas Observatory (LCO), Steward Observatory 0.7 m (28 inch) Schmidt Telescope (part of the Catalina Sky Survey; CSS) at Mount Lemmon Observing Facility (MLOF).

*Software:* astropy (Astropy Collaboration et al. 2013; The Astropy Collaboration et al. 2018), The IDL Astronomy

<sup>36</sup> <https://dcc.ligo.org/LIGO-T1800133/public>

User's Library (Landsman 1993), SCAMP (Bertin 2006, 2010a), SWarp (Bertin 2010b), IRAF (Tody 1986, 1993), SExtractor (Bertin & Arnouts 1996), ZOGY (<https://github.com/pmvreeswijk/ZOGY>).

### ORCID iDs

M. J. Lundquist  <https://orcid.org/0000-0001-9589-3793>  
 K. Paterson  <https://orcid.org/0000-0001-8340-3486>  
 W. Fong  <https://orcid.org/0000-0002-7374-935X>  
 D. J. Sand  <https://orcid.org/0000-0003-4102-380X>  
 J. E. Andrews  <https://orcid.org/0000-0003-0123-0062>  
 I. Shivaie  <https://orcid.org/0000-0003-4702-7561>  
 S. Valenti  <https://orcid.org/0000-0001-8818-0795>  
 S. Yang  <https://orcid.org/0000-0002-2898-6532>  
 A. R. Gibbs  <https://orcid.org/0000-0002-2575-2618>  
 R. C. Amaro  <https://orcid.org/0000-0002-1546-9763>  
 I. Arcavi  <https://orcid.org/0000-0001-7090-4898>  
 P. Behroozi  <https://orcid.org/0000-0002-2517-6446>  
 N. Butler  <https://orcid.org/0000-0002-9110-6673>  
 L. Chomiuk  <https://orcid.org/0000-0002-8400-3705>  
 A. Corsi  <https://orcid.org/0000-0001-8104-3536>  
 X. Fan  <https://orcid.org/0000-0003-3310-0131>  
 C. J. Grier  <https://orcid.org/0000-0001-9920-6057>  
 F. Guzman  <https://orcid.org/0000-0001-9136-929X>  
 D. A. Howell  <https://orcid.org/0000-0003-4253-656X>  
 B. T. Jannuzi  <https://orcid.org/0000-0002-1578-6582>  
 P. Kelly  <https://orcid.org/0000-0003-3142-997X>  
 P. Milne  <https://orcid.org/0000-0002-0370-157X>  
 A. Nugent  <https://orcid.org/0000-0002-2028-9329>  
 E. Palazzi  <https://orcid.org/0000-0002-8691-7666>  
 D. Reichart  <https://orcid.org/0000-0002-5060-3673>  
 A. Rest  <https://orcid.org/0000-0002-4410-5387>  
 A. Rossi  <https://orcid.org/0000-0002-8860-6538>  
 G. Schroeder  <https://orcid.org/0000-0001-9915-8147>  
 K. Spekkens  <https://orcid.org/0000-0002-0956-7949>  
 J. Strader  <https://orcid.org/0000-0002-1468-9668>  
 D. Trilling  <https://orcid.org/0000-0003-4580-3790>  
 B. Weiner  <https://orcid.org/0000-0001-6065-7483>  
 J. C. Wheeler  <https://orcid.org/0000-0003-1349-6538>  
 G. G. Williams  <https://orcid.org/0000-0002-3452-0560>  
 A. Zabludoff  <https://orcid.org/0000-0001-6047-8469>

### References

- Abbott, B. P., Abbott, R., Abbott, T. D., et al. 2016a, *LRR*, 21, 3  
 Abbott, B. P., Abbott, R., Abbott, T. D., et al. 2016b, *ApJL*, 826, L13  
 Abbott, B. P., Abbott, R., Abbott, T. D., et al. 2017a, *PhRvL*, 119, 161101  
 Abbott, B. P., Abbott, R., Abbott, T. D., et al. 2017b, *ApJL*, 850, L40  
 Abbott, B. P., Abbott, R., Adhikari, R., et al. 2009, *RPPh*, 72, 076901  
 Acernese, F., Agathos, M., Agatsuma, K., et al. 2015, *CQGra*, 32, 024001  
 Andreoni, I., Ackley, K., Cooke, J., et al. 2017, *PASA*, 34, e069  
 Arcavi, I., Hosseinzadeh, G., Howell, D. A., et al. 2017a, *Natur*, 551, 64  
 Arcavi, I., McCully, C., Hosseinzadeh, G., et al. 2017b, *ApJL*, 848, L33  
 Astropy Collaboration, Robitaille, T. P., Tollerud, E. J., et al. 2013, *A&A*, 558, A33  
 Barnes, J., & Kasen, D. 2013, AAS Meeting Abstracts, 221, 346.04  
 Bertin, E. 2006, in ASP Conf. Ser. 351, *Astronomical Data Analysis Software and Systems XV*, ed. C. Gabriel et al. (San Francisco, CA: ASP), 112  
 Bertin, E. 2010a, SCAMP version 1.0b6: Automatic Astrometric and Photometric Calibration, *Astrophysics Source Code Library*, ascl:1010.063  
 Bertin, E. 2010b, SWarp version 2.38.0: Resampling and Co-adding FITS Images Together, *Astrophysics Source Code Library*, ascl:1010.068  
 Bertin, E., & Arnouts, S. 1996, *A&AS*, 117, 393  
 Blanchard, P. K., Berger, E., Fong, W., et al. 2017, *ApJL*, 848, L22  
 Blondin, S., & Tonry, J. L. 2007, *ApJ*, 666, 1024  
 Brinnel, V., Carracedo, A. S., Barbarino, C., Tartaglia, L., & Yaron, O. 2019, *TNSCR*, 2019-417, 1  
 Cantiello, M., Jensen, J. B., Blakeslee, J. P., et al. 2018, *ApJL*, 854, L31  
 Carini, R., Izzo, L., Palazzi, E., et al. 2019, *GCN*, 24252, 1  
 Chambers, K. C., Boer, T. D., Bulger, J., et al. 2019c, *TNSTR*, 2019-777, 1  
 Chambers, K. C., Huber, M. E., Flewelling, H., et al. 2019a, *TNSTR*, 2019-665, 1  
 Chambers, K. C., Huber, M. E., Flewelling, H., et al. 2019b, *TNSTR*, 2019-639, 1  
 Chambers, K. C., Magnier, E. A., Metcalfe, N., et al. 2016, arXiv:1612.05560  
 Chornock, R., Berger, E., Kasen, D., et al. 2017, *ApJL*, 848, L19  
 Christensen, E., Africano, B., Farneth, G., et al. 2018, AAS/DPS Meeting Abstracts, 310.10  
 Coulter, D. A., Foley, R. J., Kilpatrick, C. D., et al. 2017, *Sci*, 358, 1556  
 Cowperthwaite, P. S., Berger, E., Villar, V. A., et al. 2017, *ApJL*, 848, L17  
 Dályá, G., Galgóczi, G., Dobos, L., et al. 2018, *MNRAS*, 479, 2374  
 Delgado, A., Harrison, D., Hodgkin, S., et al. 2019, *TNSTR*, 2019-679, 1  
 Díaz, M. C., Macri, L. M., Garcia Lambas, D., et al. 2017, *ApJL*, 848, L29  
 Dimitriadis, G., Jones, D. O., Siebert, M. R., et al. 2019, *GCN*, 24358, 1  
 Drout, M. R., Piro, A. L., Shappee, B. J., et al. 2017, *Sci*, 358, 1570  
 Fong, W., Berger, E., Chornock, R., et al. 2013, *ApJ*, 769, 56  
 Foucart, F., Hinderer, T., & Nissanke, S. 2018, *PhRvD*, 98, 081501  
 Fremling, C. 2018, *TNSTR*, 2018-797, 1  
 Fremling, C. 2019, *TNSTR*, 2019-634, 1  
 Gaia Collaboration, Brown, A. G. A., Vallenari, A., et al. 2018, *A&A*, 616, A1  
 Gehrels, N., Cannizzo, J. K., Kanner, J., et al. 2016, *ApJ*, 820, 136  
 Goldstein, D. A., Andreoni, I., Nugent, P. E., et al. 2019, arXiv:1905.06980  
 Graham, M. J., Kulkarni, S. R., Bellm, E. C., et al. 2019, *PASP*, 131, 078001  
 Hosseinzadeh, G., Cowperthwaite, P. S., Gomez, S., et al. 2019, *ApJL*, 880, L4  
 Jenson, J., de, K., Anand, S., et al. 2019, *GCN*, 24233, 1  
 Kagra Collaboration, Akutsu, T., Ando, M., et al. 2019, *NatAs*, 3, 35  
 Kapadia, S. J., Caudill, S., Creighton, J. D. E., et al. 2019, arXiv:1903.06881  
 Kasliwal, M. M., Cenko, S. B., Singer, L. P., et al. 2016, *ApJL*, 824, L24  
 Kasliwal, M. M., Nakar, E., Singer, L. P., et al. 2017, *Sci*, 358, 1559  
 Krawczyk, C. M., Richards, G. T., Mehta, S. S., et al. 2013, *ApJS*, 206, 4  
 Kyutoku, K., Ioka, K., & Shibata, M. 2013, *PhRvD*, 88, 041503  
 Landsman, W. B. 1993, in ASP Conf. Ser. 52, *Astronomical Data Analysis Software and Systems II*, ed. R. J. Hanisch, R. J. V. Brissenden, & J. Barnes (San Francisco, CA: ASP), 246  
 Levan, A. J., Lyman, J. D., Tanvir, N. R., et al. 2017, *ApJL*, 848, L28  
 Ligo Scientific Collaboration & VIRGO Collaboration 2019a, *GCN*, 24069, 1  
 Ligo Scientific Collaboration & VIRGO Collaboration 2019b, *GCN*, 24168, 1  
 Ligo Scientific Collaboration & VIRGO Collaboration 2019c, *GCN*, 24228, 1  
 Ligo Scientific Collaboration & VIRGO Collaboration 2019d, *GCN*, 24237, 1  
 Ligo Scientific Collaboration & VIRGO Collaboration 2019e, *GCN*, 24411, 1  
 Ligo Scientific Collaboration & VIRGO Collaboration 2019f, *GCN*, 24277, 1  
 Lipunov, V. M., Gorbvskoy, E., Kornilov, V. G., et al. 2017, *ApJL*, 850, L1  
 Lundquist, M., Sand, D., Fong, W., & Paterson, K. 2019, *TNSTR*, 2019-660, 1  
 Maíz Apellániz, J., & Weiler, M. 2018, *A&A*, 619, A180  
 McCully, C., Hiramatsu, D., Hiramatsu, D., et al. 2019, *GCN*, 24295, 1  
 Metzger, B. D. 2017, *LRR*, 20, 3  
 Morokuma, T., Ohta, K., Yoshida, M., et al. 2019, *GCN*, 24230, 1  
 Nicholl, M., Cartier, R., Pelisoli, I., et al. 2019b, *TNSCR*, 2019-693, 1  
 Nicholl, M., Short, P., Smartt, S. J., et al. 2019a, *GCN*, 24217, 1  
 Nordin, J., Brinnel, V., Giomi, M., et al. 2019, *TNSTR*, 2019-409, 1  
 Pan, Y.-C., Kilpatrick, C. D., Simon, J. D., et al. 2017, *ApJL*, 848, L30  
 Pian, E., D'Avanzo, P., Benetti, S., et al. 2017, *Natur*, 551, 67  
 Pogge, R. W., Atwood, B., Brewer, D. F., et al. 2010, *Proc. SPIE*, 7735, 77350A  
 Pozanenko, A., Volnova, A., Mazaeva, E., et al. 2017, *A&AC*, 1, 8  
 Rosswog, S., Feindt, U., Korobkin, O., et al. 2017, *CQGra*, 34, 104001  
 Schlafly, E. F., & Finkbeiner, D. P. 2011, *ApJ*, 737, 103  
 Schmidt, G. D., Stockman, H. S., & Smith, P. S. 1992, *ApJL*, 398, L57  
 Setzer, C. N., Biswas, R., Peiris, H. V., et al. 2019, *MNRAS*, 485, 4260  
 Singer, L. P., Chen, H.-Y., Holz, D. E., et al. 2016, *ApJL*, 829, L15  
 Singer, L. P., & Price, L. R. 2016, *PhRvD*, 93, 024013  
 Smartt, S. J., Chambers, K. C., Smith, K. W., et al. 2016, *MNRAS*, 462, 4094  
 Smartt, S. J., Chen, T. W., Jerkstrand, A., et al. 2017, *Natur*, 551, 75  
 Smith, K. W., Young, D. R., McBrien, O., et al. 2019, *GCN*, 24210, 1  
 Soares-Santos, M., Holz, D. E., Annis, J., et al. 2017, *ApJL*, 848, L16  
 Stanek, K. Z. 2019, *TNSTR*, 2019-175, 1  
 Tanaka, M., Hotokezaka, K., Kyutoku, K., et al. 2014, *ApJ*, 780, 31  
 Tanvir, N. R., Levan, A. J., González-Fernández, C., et al. 2017, *ApJL*, 848, L27  
 Taubenberger, S., Pastorello, A., Mazzali, P. A., et al. 2006, *MNRAS*, 371, 1459

- The Astropy Collaboration, Price-Whelan, A. M., Sipőcz, B. M., et al. 2018, *AJ*, **156**, 123
- The LIGO Scientific Collaboration, the Virgo Collaboration, Abbott, B. P., et al. 2018, arXiv:1811.12907
- Toba, Y., Oyabu, S., Matsuhara, H., et al. 2014, *ApJ*, **788**, 45
- Tody, D. 1986, *Proc. SPIE*, **627**, 733
- Tody, D. 1993, in ASP Conf. Ser. 52, *Astronomical Data Analysis Software and Systems II*, ed. R. J. Hanisch, R. J. V. Brissenden, & J. Barnes (San Francisco, CA: ASP), 173
- Tonry, J., Denneau, L., Heinze, A., et al. 2019, *TNSTR*, **2019-320**, 1
- Tonry, J., Stalder, B., Denneau, L., et al. 2017, *TNSTR*, **2017-810**, 1
- Tonry, J. L., Denneau, L., Heinze, A. N., et al. 2018, *PASP*, **130**, 064505
- Troja, E., Piro, L., van Eerten, H., et al. 2017, *Natur*, **551**, 71
- Utsumi, Y., Tanaka, M., Tominaga, N., et al. 2017, *PASJ*, **69**, 101
- Valenti, S., Sand, D. J., Yang, S., et al. 2017, *ApJL*, **848**, L24
- Villar, V. A., Guillochon, J., Berger, E., et al. 2017, *ApJL*, **851**, L21
- Weiler, M. 2018, *A&A*, **617**, A138
- White, D. J., Daw, E. J., & Dhillon, V. S. 2011, *CQGra*, **28**, 085016
- Williams, G. G., Olszewski, E., Lesser, M. P., & Burge, J. H. 2004, *Proc. SPIE*, **5492**, 787
- Khakaj, E., Rojas-bravo, C., Foley, M. M., et al. 2017, *TNSCR*, **2017-1318**, 1
- Yang, S., Sand, D. J., Valenti, S., et al. 2019, *ApJ*, **875**, 59
- Zackay, B., Ofek, E. O., & Gal-Yam, A. 2016, *ApJ*, **830**, 27