



The Genetic Dissection of Economically Important Traits in Chilli Genotypes (*Capsicum annuum* L.) through Multivariate Analysis

Umesh Babu B. S. ^{a++*}, Tembhurne, B. V. ^b, Honnappa M. ^a,
Kuchanur P. H. ^b and Kisan B. ^c

^a Department of Genetics and Plant Breeding, COA, UAS, Raichur (Karnataka), 584104, India.

^b Department of Genetics and Plant Breeding, UAS, Raichur (Karnataka), 584104, India.

^c Department of Molecular Biology & Agricultural Biotechnology, UAS, Raichur (Karnataka), 584104, India.

Authors' contributions

This work was carried out in collaboration among all authors. All authors read and approved the final manuscript.

Article Information

DOI: 10.9734/IJPSS/2023/v35i224119

Open Peer Review History:

This journal follows the Advanced Open Peer Review policy. Identity of the Reviewers, Editor(s) and additional Reviewers, peer review comments, different versions of the manuscript, comments of the editors, etc are available here: <https://www.sdiarticle5.com/review-history/108679>

Original Research Article

Received: 10/09/2023

Accepted: 16/11/2023

Published: 16/11/2023

ABSTRACT

Chilli (*Capsicum annuum* L.) cultivar share a variety of different and intriguing growth and yield characteristics, for a plant breeder studies on genotypic and phenotypic relationship for horticulture cum vegetable spicy crop and its traits are useful to design, evaluate and to develop selection criteria for desired traits. With this background information the present study focused on identification of crucial characteristics required for boosting yield and to determine the parameters for the selection of superior genotypes. A total of 30 chilli genotypes were subjected to variability, divergence and mutual correlation studies for yield and yield component traits by using multivariate analysis.

** Research Scholar;

*Corresponding author: E-mail: umeshbs888@gmail.com;

Results from the analysis of variance and variability revealed highly significant differences at ($p \leq 0.01$) and ($p \leq 0.05$) for all the studied traits. The highest genotypic coefficient of variation (GCV) and phenotypic coefficient of variation (PCV) were observed for FL followed by FYP, NFP, IFW, WPDM, FD, PH and NSF respectively, except for MC has revealed low GCV and PCV. All the traits were shown the presence of high heritability (h^2) in broad sense ($>60\%$) coupled with high GAM ($>20\%$), except for MC, indicating the presence of positive additive gene action and effective transmission of characters to the next generation with selection. Highly significant and positive strong correlation was observed for IFW ($r = 0.68^{**}$), WPDM ($r = 0.54^{**}$), TW ($r = 0.40^*$) and FD ($r = 0.37^*$) with FYP, while the path analysis revealed highest direct effect for the traits such as FPT, FL and NFP. Principle component analysis revealed a 70.60% total variation accounted with first four PCAs with Eigen vector values more than one. Further cluster analysis grouped the 30 chilli genotypes into four major cluster (Cluster I, II, III and IV) and combined cluster analysis identified genotypes contributing to the maximum variability, viz., cultivars such as LIPSTICK, B.KADDI, B.DABBI, BHOOT JALOKIA, SUM- 17, BCH- 42, PBC- 80, LCA- 310, M- 262, KA2- L, S. SELECTION 1, JCH- 42 and 9608- U, so these genotypes serves as a donor for further breeding programme to develop superior cultivars.

Keywords: Chilli (*Capsicum annuum* L.); analysis of variance; genetic divergence; principle component analysis.

1. INTRODUCTION

Chilli (*Capsicum annuum* L.) a diploid species ($2n = 24$), with genus *Capsicum* belongs to the family Solanaceae [1], The 31 species of the genus *Capsicum* vary greatly in terms of morphology, particularly in terms of fruit color, size, shape, and levels of pungency [2], among these only five - *C. annuum* (hot chilli), *C. baccatum* (pungent chilli), *C. chinense* (West Indies chilli), *C. frutescens* (bird chilli), and *C. pubescens* (sweet pepper) have been domesticated and cultivated. The fruits are botanically known as berries, unlike most berries, chilli seeds are not embedded in the fleshy pericarp but are located in the placenta which is a surface of the carpel where the potential ovules are attached. In India chilli is one of the cutting edge vegetable cum spice crops valued for its aroma, taste, flavor, pungency and an important dietary component for Indians, that food is tasteless without chillies and their by-products. Considering that it is used in mature dried fruit as a spice and fresh green fruit as a vegetable with other foods. In addition it's a richest source of vitamin 'C' and anti-oxidant [3,4], so it is appreciated as a medicinal and a decorative, and it is utilized in the culinary industry for flavour and coloring [5]. The world's largest producer, user, and exporter of chillies is India, which also has the largest land area (7.33 lakh ha, or 42.81% of the global area). According to the Chilli Outlook 2021, India produces the most chillies in the world with 17.64 lakh tonnes,

followed by China, Ethiopia, Thailand and Pakistan.

The origin of chilli is believed to be in Mexico with secondary centres in Guatemala and Bulgaria. It was introduced to Europe by Columbus in the 15th century and spread to the rest of the globe along the spice trading routes to Africa, India, China, and Japan [6]. As a highly commercialised crop for extraction of oleoresin, in India it is grown under diverse ecosystems with major producing states as Andhra Pradesh, Telangana, Madhya Pradesh, Karnataka and West Bengal respectively [7], it is popularly known as *mirchi* in Karnataka, the average yield of chilli in North Karnataka is higher side than in South, primarily due to the difference in the soil and agroclimatic conditions [8]. The genetic variability and characteristic associations were previously studied by various workers, especially for *annuum* spp as it is the most ecofriendly species in the Indian subcontinent with great export potential [9]. The Indian germplasm is mainly represented by two species, *C. annuum* and *C. frutescens* with autogamous spp however the most number of current cultivars are open pollinated varieties with 7- 90% cross pollination [9,4,1].

Large genetic variety is present throughout India and beyond in the majority of its farmed areas as a result of the crop's long history of cultivation, outcrossing nature, bearing habit and

crop duration and popularity [10,11]. The population's genetic diversity aids in the identification of appropriate parents for use in chilli crop breeding programmes [12]. Given that fruit yield is a complex trait influenced by a multitude of contributing characters (polygenic traits and their interaction), it is imperative to understand the significance of inter-association of different component characters and their association with fruit yield before breeding through selection [13,14]. The information on genetic variability and character association with yield and its components are most crucial as it is a cash crop, to initiate the breeding programme to evolve high yielding varieties. Very little research work has been done in understanding the genetic diversity and phenotypic variability for diverse morpho-economic traits. By considering above available background information, the present study was undertaken to estimate the extent of genetic variability, principal component analysis (PCA), direct and indirect effects, character association, and clustering analysis in the chilli genotypes were done to understand existing variability through the multivariate statistical parameters, which is a prelude to potential chilli crop improvement.

2. MATERIALS AND METHODS

2.1 Experimental Material and Site

The experiment was carried out at College of Agriculture, University of Agricultural Sciences (UAS) Raichur (Karnataka) during *Kharif* - 2020. The experiment material comprised of 30 diverse chilli genotypes including two checks Byadgi Kaddi and Byadgi Dabbi, The details were given in Table 1. Byadgi chilli is a famous variety of chilli belongs to the species (*Capsicum annum* L.) grown in Karnataka state and it is named after the town, Byadgi, which is Taluk headquarter in the Haveri district of Karnataka. Byadgi chillies were designated as a Geographical Indication (GI application No. 129) product. Byadagi Kaddi and Byadagi Dabbi are the two primary varieties of Byadgi chillies grown in Karnataka. The key feature of Byadagi Kaddi has long fruit length (10 to 15) cm with very little pungency and it is thin, linear, light green in

color, maturing to a deep red colour at the stage of ripening, develops the distinctive wrinkles. Another Byadagi chilli variation that works well for dry and green chilli purposes is the Byadagi Dabbi. The fruits have a medium length (8 to 10 cm), a small apical curvature, and a slight bulge at the calyx base, this particular cultivar is more prone to disease and pests. However the Byadagi Dabbi Chilli meets the same standards of excellence as the Byadagi Kaddi.

2.2 Experimental Layout and Data Collection

The experiment was laid in a randomized complete block (RCBD) design with two replications. Each experimental unit was represented by single row accommodating 10 plants with 75x45 cm inter and intra row spacing. Normal crop was raised by following all recommended cultural practices and plant protection measures. Five competitive plants were selected at random from each single row plot in each replication and observations were recorded on 12 economically useful traits viz., plant height (PH: cm), number of primary branches per plant (NPBPP), number of fruits per plant (NFP), fruit diameter (FD: mm), fruit length (FL: cm), individual fruit weight (IFW: g), number of seeds per fruit (NSF), test weight (TW: g), whole plant dry matter (WPDM: g), moisture content (MC: %), fruit pericarp thickness (FPT: mm) and fruit yield per plant (FYP: g).

2.3 Statistical Analysis

The mean over replication of data for each character was subjected to statistical analysis. The estimates of genotypic and phenotypic coefficient of variation and ANOVA, correlation, principle component analysis (PCA) was carried out by using standard protocol package called (*ggplot, agricolae, corrplot*.) R software (*version 4.3.2*) (R Core Team 2020), while the path coefficient analysis was carried out as per method given by Dewey and Lu (1959). Cluster analysis were done by Ward's method using Paleontological Statistics Software (PAST) *version 4.03* [15] package for education and data analysis.

Table 1. List of chilli genotypes used in the present investigation

Sl. No.	Genotypes
1	ACB1- L
2	ACB1- S
3	BCH- 42
4	BHOOT JALOKIA
5	ENT- 1
6	HDC- 75- 1
7	JABALPUR LOCAL
8	JCH- 42
9	KA2- L
10	KBCH- 1
11	LCA- 310
12	LCA- 960
13	LIPSTICK
14	M- 262
15	PBC- 80
16	P3
17	RAJPUT
18	RAICHUR BULLET
19	SANKESHWAR SELECTION 1
20	SANKESHWAR SELECTION 2
21	SANKESHWAR SELECTION 3
22	SITARA
23	SUM- 17
24	TIWARI
25	5- B
26	07- L
27	07- S
28	9608- U
29	BYADGIKADDI (check)
30	BYADGIDABBI (check)

3. RESULTS AND DISCUSSION

ANOVA: A source of variation in chilli genotypes.

The results of ANOVA from mean sum of squares (MSS) for yield and yield attributing traits in 30 chilli genotypes were given in Table 2. The results revealed that MSS due to genotypes were highly significant ($p < 0.01$ and $p < 0.05$) for all the traits under study, viz., PH: 521.93**; NPBPP: 0.34**; NFP: 724.70**; FD: 16.69**; FL: 16.53**; IFW: 0.09**; NSF: 583.05**; TW: 1.35**; WPDM: 202.66**; MC: 66.72**; FPT: 0.08**; FYP: 552.92**. The MSS due to replication has revealed presence of significant difference ($p < 0.01$ and $p < 0.05$) for only three traits among the twelve investigated features such as FD: 5.51*; FL: 8.22** and MC: 16.99* for yield and its related traits (Table 2). The size of the observed significant differences suggested that the genotypes under investigation exhibit a greater amount of genetic diversity. The coefficient of variation (CV %) was substantial heterogeneity for yield and yield related component, for instance, the CV were reasonably higher for FPT: 10.82%; NPBPP: 9.60% with the least CV

obtained for NFP: 1.90% and MC: 2.14%. The overall result of ANOVA revealed that, MSS due to genotypes and replication contributing for the existence of significant difference and to the variability. In literature similar kind of results were obtained from Pradhan et al. [16]; Usman et al. [17]; Dhal et al. [18]; Khan et al. [19] and Jyothi et al. [20].

3.1 Evaluation of the Average Performance and Genetic Plasticity

Selection criteria for breeder preference depends on the extent of variation in fruit yield and its contributing agronomic traits including growth and yield parameters such as plant height (PH), number of primary branches per plant (NPBPP), number of fruits per plant (NFP), fruits diameter (FD), fruit length (FL), individual fruit weight (IFW), number of seeds per fruits (NSF), test weight (TW), whole plant dry matter (WPDM), moisture content (MC), fruit pericarp thickness (FPT) and fruit yield per plant (FYP). These were examined, for the mean value ($\frac{\sum x \sum x}{n}$), range, genetic variance components such as genotypic

and phenotypic coefficient of variation (GCV and PCV) ($\sigma^2g\sigma^2g$ and $\sigma^2p\sigma^2p$), broad sense heritability (h^2h^2) and genetic advance percent mean (GAM) as shown in Table 3 along with box plot showing replication wise graphical representation of frequency distribution for each traits. The box indicating the existence of the 50% of our data within the box, the lower end of the box is 1st quartile (Q₁), the upper end of the box is 3rd quartile (Q₃) which shows the existence of the 25% of our data above the Q₃ and below the Q₁ we find remaining 25% of the data distribution, the range between Q₁ and Q₃ are called inter- quartile range with solid line indicating the median value of the data distribution, the points above the outlier are the maximum value for the traits as shown in Fig. 1. Genetic variability revealed existence of wide spectrum of variability in the mean performance among the 30 chilli genotypes for all the traits indicating the presence of sufficient genetic variability, PH was varied from 50.00 to 111.00 cm with $\bar{X}\bar{X}$ = 72.71 cm, GCV and PCV for the traits was 22.16 and 22.26 with h^2h^2 of 99.04 and GAM of 45.43. NPBP was varied from 2.00 to 3.00 with $\bar{X}\bar{X}$ = 2.31, GCV and PCV for the traits was 16.57 and 19.14 with h^2h^2 of 74.90 and GAM of 29.54. NFP was varied from 21.85 to 127.00 with $\bar{X}\bar{X}$ = 63.80, GCV and PCV for the traits was 29.80 and 29.86 with h^2h^2 of 99.60 and GAM of 61.27. In chilli the size of the fruit is maximum at shoulders so in the current work FD was varied from 5.45 mm to 20.80 mm with $\bar{X}\bar{X}$ = 11.89 mm, GCV and PCV for the traits was 23.97 and 24.58 with h^2 of 95.09 and GAM of 48.15. FL was varied from 1.55 cm to 13.56 cm with $\bar{X}\bar{X}$ = 6.81 cm, GCV and PCV for the traits was 41.93 and 42.45 with h^2h^2 of 97.55 and GAM of 85.32. IFW was varied from 0.29 g to 1.34 g with $\bar{X}\bar{X}$ = 0.75 g, GCV and PCV for the traits was 27.72 and 28.93 with h^2h^2 of 91.81 and GAM of 54.72. NSF was varied from 41.00 to 119.50 with $\bar{X}\bar{X}$ = 78.23, GCV and PCV for the traits was 21.71 and 21.93 with h^2h^2 of 98.07 and GAM of 44.30. TW was varied from 3.70 g to 7.60 g with $\bar{X}\bar{X}$ = 4.81 g,

GCV and PCV for the traits was 16.90 and 17.30 with h^2h^2 of 95.44 and GAM of 34.02. WPDM was varied from 13.48 g to 55.50 g with $\bar{X}\bar{X}$ = 39.59 g, GCV and PCV for the traits was 25.33 and 25.50 with h^2h^2 of 98.67 and GAM of 51.84. MC was varied from 50.32% to 78.04% with $\bar{X}\bar{X}$ = 66.35%, GCV and PCV for the traits was 8.57 and 8.83 with h^2h^2 of 94.13 and GAM of 17.13. FPT was varied from 0.69 mm to 1.65 mm with $\bar{X}\bar{X}$ = 1.15 mm, GCV and PCV for the traits was 15.91 and 19.24 with h^2h^2 of 68.36 and GAM of 27.10. FYP was varied from 30.70 g to 87.00 g with $\bar{X}\bar{X}$ = 51.45 g, GCV and PCV for the traits was 32.26 and 32.36 with h^2h^2 of 99.38 and GAM of 66.25. The maximum range of variability reported in the current study's analyses of all the traits was found in the number of fruits per plant, the number of seeds per fruit, plant height, fruit yield per plant, and whole plant dry matter, while the minimum range of variability was found in the thickness of the fruit pericarp and the number of primary branches per plant (Table 2), most of the traits exhibit a wide range of variance, which provides room for enhancement of desirable types. The traits TW, NPBP, and FPT showed moderate genotypic and phenotypic coefficients of variation (GCV and PCV), while only MC revealed the presence of low GCV and PCV. The highest GCV and PCV were observed for FL followed by FYP, NFP, IFW, WPDM, FD, PH, and NSF, respectively. Except for MC, which showed high heritability with a moderate amount of GAM, all the characteristics (PH, NPBP, NFP, FD, FL, IFW, NSF, TW, WPDM, FPT, and FYP) were demonstrated to have high heritability in a wide sense (>60%) paired with high GAM (>20%). Since heritability value alone does not have much significance because it does not take into account the magnitude of absolute variability, the genetic progress is still a more meaningful assessment. In order to determine the projected genetic gain through selection, it is consequently required to use heritability in conjunction with selection differential or genetic advance and the expected genetic advance in *per- cent* mean were shown in Table 2. In the current study, the gain ranged from 17.13 (MC) to 85.32 (FL) and could be reached by choosing the genotypes that make up the top 5% of all genotypes.

Since high heritability estimates for quantitative traits have been found to be helpful for selection based on phenotypic performance, the present study's h^2h^2 estimates were high for all the traits and ranged from 68.36 to 99.60%, indicating that a greater proportion of phenotypic variance was attributed to the genotypic variance and was less influenced by environmental effects, and the characters are effectively transmitted to the progeny, suggesting major role of genetic constitution in the expression of a character and thus selection based on phenotypic expression could be relied upon, hence, selection can bring worthwhile improvement in these traits (Table 3) and this variation indicated the possibility of obtaining very high selection response with respect to these traits. Results were in accordance with the Pandit and Adhikary, [21]; Maurya et al. [22], Pandiyaraj, [23]; Markam and Sharma., [24], high heritability values for these variables suggest that genetic factors dominated the variation observed and that environmental factors had a less role. The occurrence of significant GCV for the qualities mentioned above indicates that these characters might be improved and fixed through altering selection. High GCV for green fruit yield per plant and number of fruit per plant was also reported by Munshi and Behera, [25,26]; Gogoi and Gautam, 2002; Sreelathkumary and Manju, [27]; Sreelathakumary and Rajamony [28]; Samadia, [29], high heritability for PH, NPBPP, NFP, FD, FL, TW and FPT corroborate the findings of Ukkund et al. [30]; Tembhrune et al. [31]; Gupta et al. [32]; Sharma et al. [33] and Kumar et al. [34], while Markam and Sharma. [24] reported high GCV, PCV, h^2h^2 , and GAM for fruit length, fruit diameter, and fruit thickness.

3.2 Phenotypic Correlation

Phenotypic correlation *ie.*, the nature of mutual association of twelve yield and yield related traits for the 30 chilli genotypes were presented in Fig. 2. In the present study, correlation coefficients ranged from - 0.51 (NFP vs. FD) to 0.68 (IFW vs. FY), for all traits examined, with the exception of NPBPP, there was a positive phenotypic connection between FYP and other traits. IFW: $r = 0.68^{**}$; WPDM: $r = 0.54^{**}$; TW: $r = 0.40^*$; and FD: $r = 0.37^*$ have all shown a high positive and significant connection with FYP. The strong positive and significant correlation of the traits (IFW, WPDM, TW, and FD with FYP represent these characters are the main determinants and effective traits of fruit yield in chilli, suggests that

these characters are useful for improving fruit yield through selective breeding because they contribute in a way that increases FYP in productivity, seed weight, and dry matter production. The result is in line with the work of other scholars Usman et al. [35]; Pradhan et al. [16]; Patel et al. [36]; Farwah et al. [37]; Tilahun et al. [1] who observed that fruit yield per plant revealed strong and highly significant associations with fruit length, fruit weight, number of fruits and plant height at harvest characters. According to Lakshmi et al. [38], average fruit weight and number of fruits per plant had a strong positive correlation with fruit yield in two tomato F_2 segregating populations. Bader and Gendy during 2018 reported significant positive association among fruit diameter and number of fruits per plant interpreted as the significant positive association for any pair of characters indicates that the improvement predicted under selection for one of them, would automatically extended to the other. Similar results were confirmed the above mentioned conclusion by [39], when studying a segregate population of *Capsicum annum* L., a positive and significant link between the fruit length, width, and number of fruits per plant with and its overall production was confirmed by observing the correlation for features associated to yield.

On the other hand the overall inter correlation among the important yield attributing traits contributed to fruit yield per plant through the influence of following independent traits as fallows. The results illustrated that, a significant agronomic growth characteristic with a measurable feature is PH was non significantly correlated with all other traits however we noticed that the trait had maximum positive insignificant association with MC ($r = 0.34$) and followed the decreasing order of NSF: $r = 0.31$; IFW: $r = 0.20$; FYP: $r = 0.14$; TW: $r = 0.11$; FD: $r = 0.09$; FPT: $r = 0.07$; WPDM: $r = 0.04$ and NPBPP: $r = 0.01$ in the present study it revealed direct link with the number of seeds per fruit, fruit weight, fruit diameter, plant dry matter production, that directly influences plant architecture with fruit yield potentiality through cell elongation rate, a clear evidence provided by Pradhan et al., 2016; Tembhrune et al., 2017, were they have reported positive association of plant height with the number of secondary and primary branches per plant, number of fruits per plant. The positive association of PH with FYP could be justified by the increase in the number of fruits as results of more number of branches

per plant leading to higher fruit yield per plant. However the trait also revealed negative non-significant association with FL and NFP might be due to various factors have been advocated in contributing to negative relationships among plants components including competition for ambient resources such as nutrient, moisture, light; genetic factors such as linkage and pleiotropy [40,35].

The NPBPP had revealed negative correlation for most of the traits except NFP, FL and NSF and *vice versa* is true, the positive association of NPBPP along with PH may be justifiable as the taller the plant produce more number of primary branches and more number of leaves which is very critical requirement for photosynthesis in plant intern will lead to the development of fruit bearing branches, Pandit, and Adhikary, [21] were revealed similar results while studying reproductive characters in chilli genotypes collected from the local farmers and several researchers identified moderate to strong positive association between the different quantitative traits. The NFP was positive correlation with only for WPDM and FYP among other traits studied and *vice versa* is true, Ajjaplavara, et al. [41]; Kumari et al. [42] reported negative correlation between fruit yield and primary branch per plant. FD had given positive association with traits like IFW, TW, FYP, FPT, WPDM, FL and MC. Fruit length was measured as the distance from pedicel attachment to its apex it has recorded highest inter- correlation with NSF: $r = 0.50^{**}$ followed by IFW: $r = 0.32$; FPT: $r = 0.28$; FYP: $r = 0.23$; NPBP: $r = 0.17$; TW: $r = 0.15$ and FD: $r = 0.07$ and *vice versa* is true. Pujar et al. [43] revealed while studying with chilli germplasm accessions and popular local cultivar of Byadagi Kaddi and Byadagi Dabbi as the selection for higher number of fruits and longer fruited plants/fruit size would simultaneously result in selection for higher total fruit yield. Most of the studied traits has recorded strong inter- correlation with individual fruit weight and it is in the order of FYP: $r = 0.68^{**}$ followed by FD: $r = 0.64^{**}$; FPT: $r = 0.54^{**}$; TW: $r = 0.50$; WPDM: $r = 0.39^*$; FL: $r = 0.32$; PH: $r = 0.20$; NSF: $r = 0.19$ and MC: $r = 0.19$ except for NPBP and NFP and *vice versa* is true. Number of seeds per fruit has revealed positive correlation in the order FL: 0.5^{**} ; PH: 0.34^* ; TW: 0.33^* ; FYP: 0.19 ; test weight has recorded positive significant association with FYP: 0.40^{**} ; MC: 0.34 and FPT, whole WPD M recorded positive significant association FYP: 0.54^{**} ; FPT: 0.35^* and MC: 0.16 , MC and FPT

has revealed positive significant association with FYP: 0.23 and 0.18 respectively and *vice versa* is true.

3.3 Path Analysis of Fruit Yield with Other Contributing Traits

Simple correlation metrics may not accurately capture the characteristics contribution to fruit yield, sometimes mislead may not be true always, so use of path analysis leads to partitioning of the data and permitting a critical examination of the relative importance of each trait [44]. In reality, path coefficient analysis provides a different image than correlation coefficients when evaluating the cause and effect relationship since it allows the correlation coefficients to be divided into components of direct and indirect effects. In the present work the path coefficient analysis was carried out using phenotypic correlation values of different yield components traits on fruit yield as an artefact, by using statistical software packages called Window stat *version 9*. The residual factor which measures the extent to which the causal factors implicated in the path analysis have explained the 33.00% variability in dependent character *ie.*, fruit yield per plant and leaving 67.00% ($p = 0.67$) was unexplained. The results obtained in phenotypic direct and indirect effects as the path of influence of other quantitative characters on fruit yield per plant were presented in Table 3 and graphically shown in Fig. 3.

3.4 Direct Effect on Fruit Yield

Phenotypic correlations of the different characters were partitioned to path coefficient with the view to identifying important fruit characters having direct effect on yield. The characters contributing towards the highest positive direct effect *via* fruit yield per plant showed that FPT ($p = 0.894$), FL ($p = 0.356$), NFP ($p = 0.246$), PH ($p = 0.239$), TW ($p = 0.213$), IFW ($p = 0.079$), FD ($p = 0.051$), NPBPP ($p = 0.028$) and MC ($p = 0.000$). Even though the traits such as individual fruit weight, fruit diameter, number of primary branches and moisture content reported very small direct effect on fruit yield however these traits have a cumulative effect through its indirect effect. A similar trend of classification for path coefficient like as very high >1 ; $0.3-1$ for high; $0.2-0.29$ for moderate; $0.1-0.19$ for low; $0.00-0.09$ for negligible was noted by Lenka and Mishra 1973, and in our study the characters with direct favourable effect were observed for FPT, FL,

NFP, PH and TW (Table 3, Fig. 3), which contributes maximum towards the fruit yield per plant, thus selection on the basis of those traits would be a paying proposition for evolving high yielding genotypes, so these characters can be used to develop an optimally reliable selection index for realizing improvement in chilli fruit yield. The importance of fruit length or size, fruit numbers and fruit weight and test weight has been highlighted by Jabeen et al. [45]; Sabin and Singh, [46]; Maga et al. [47]; Abraham et al., 2017; Bijalwan and Mishra, [48], also verified positive direct effect of the variables on fruit yield in green pepper fruits, further Soares et al., [49], in *C. chinense* L. reported that highest direct effects of FL, PH and FPT on fruit yield indicating a large contribution of these characters to increase the yield of peppers. However it is noted that the negative direct effect has observed for NSF ($p = -0.126$) and WPDM ($p = -0.007$), having all the traits in addition positive association with fruit yield per pant has revealed for all the studied traits in the order of individual fruit weight, test weight, fruit diameter, fruit length, moisture content, fruit pericarp thickness, plant height and number of fruits per plant except for number of primary branches per plant (Table 3) which contributed negatively to the fruit yield per plant, which means increase in the primary branches might contributes more to the vegetative growth rather than the contributing to the economic outcome. The present findings are in accordance with Tilahun et al., 2022 worked on green fruit chilli and reported as higher the number of fruits per plant and fruit length lead to an increased in chilli fruit yield.

3.5 Indirect Effect on Fruit Yield

The PH ($p = 0.130$) exhibited highest positive indirect effect towards FYP followed by WPDM ($p = 0.09$), IFW ($p = 0.073$), FL ($p = 0.056$), NSF ($p = 0.033$), FD ($p = 0.029$) and TW ($p = 0.019$), meanwhile, NPBPP ($p = 0.043$) has revealed highest positive indirect effect to the FYP via MC ($p = 0.006$), TW ($p = 0.002$), IFW ($p = 0.001$), FPT ($p = 0.001$), FD ($p = 0.000$), FL ($p = 0.000$) and NSF ($p = 0.000$). NFP showed highest positive indirect effect for FYP via two important weighted economic traits such as FYP ($p = 0.049$) and IFW ($p = 0.001$). FD ($p = 0.284$) has revealed highest positive indirect effect on FYP via FL ($p = 0.026$), NSF ($p = 0.018$), MC ($p = 0.017$), TW ($p = 0.008$), WPDM ($p = 0.007$), PH ($p = 0.006$), FPT ($p = 0.001$) and NPBPP ($p = 0.000$). These results confirmed by Lahbib et al. [50] and Kadwey et al. [51], Zhani et al. [52],

Munshi et al. [25,26], Hasan et al. [53,54] reported that plant height, number of primary branches, fruits number per plant and fruit diameter had an indirect and positive effect on production/plant, through other traits in pepper. FL ($p = 0.600$) has shown highest positive indirect effect on FYP through FD ($p = 0.187$), NSF ($p = 0.151$), MC ($p = 0.147$), TW ($p = 0.136$), WPDM ($p = 0.103$), PH ($p = 0.084$), FPT ($p = 0.084$), IFW ($p = 0.048$) and finally with the NPBPP ($p = 0.002$) except for NFP which has exhibited negative indirect effect on fruit yield.

Regarding IFW ($p = 0.166$) revealed positive indirect effect to FYP followed by FPT ($p = 0.038$), NSF ($p = 0.027$), PH ($p = 0.024$), FL ($p = 0.010$), WPDM ($p = 0.010$), MC ($p = 0.002$), TW ($p = 0.001$), NFP ($p = 0.000$) except with FD where it has exhibited negative indirect effect on fruit yield. Interestingly only two traits, NSF ($p = 0.322$) and NFP has revealed positive indirect effect on fruit yield per plant, while remaining traits revealed negative indirect effect on fruit yield via NSF. TW ($p = 0.496$) has shown highest positive indirect effect on FYP among all the traits studied in the present study followed by via MC ($p = 0.084$), FL ($p = 0.081$), NSF ($p = 0.045$), NFP ($p = 0.043$), FD ($p = 0.035$), WPDM ($p = 0.031$), PH ($p = 0.017$), NPBPP ($p = 0.016$), IFW ($p = 0.005$) except with FPT where it exhibited negative indirect effect on fruit yield via TW, it indicates that selection of promising genotypes with elevated fruit yield might be useful by the indirect selection of test weight and its positively associated characters. The dry matter of plant consists of all its constituents excluding water and this accumulation is increased in growth period and reach maximum at physiological growth period, so in the present study whole plant dry matter ($p = 0.226$) has revealed positive indirect effect on fruit yield followed by via FPT ($p = 0.001$), NPBPP ($p = 0.000$), NFP ($p = 0.000$), IFW ($p = 0.000$). Sreekumar et al., 2023 while studying the F_3 populations of Munduchilli cross (PKM CA 20 x PKM CA 08) reported positive direct and indirect effect of plant dry matter with the other agronomic traits, while, the trait was shown negative indirect effect via moisture content as the dry matter consist of all the cellular material except water or moisture content. Moisture content has revealed positive indirect effect on fruit yield via the other traits such as plant height, number of primary branches per plant, fruit diameter, fruit length, individual fruit weight, number of seeds per fruit and test weight as the water content is one of the most vital constituents in plants required for all

the plant cellular growth. Fruit pericarp thickness has shown positive indirect effect on fruit yield via the other contributed traits such as IFW ($p = 0.428$), MC ($p = 0.220$), FL ($p = 0.211$), NSF ($p = 0.130$), NPBPP ($p = 0.048$) and FD ($p = 0.002$). So from overall study revealed that indirect effect on fruit yield is in the decreasing order of the traits like fruit length, test weight, number of seeds per fruit, fruit diameter, whole plant diameter, fruit pericarp thickness, moisture content, individual fruit weight, plant height, number of fruits per plant and number of primary branches per plant (Table 3 and Fig. 3).

3.6 Clustering and Principal Components Analysis

For selecting the desired parents, estimation of existing diversity among the genotypes through genetic diversity analysis plays crucial role. The compiled information on the kind and extent of genetic variability is important for selecting the best parent for specific crosses. Analysis was carried out for yield and yield attributing traits in chilli genotypes in order to describe and to gain the better understand the source of genetic variation among the studied genotypes. The screen plot of the PCA showed in Fig. 4a and 4b explained both *percent* explained variation and eigen values associated with each principle component obtained by drawing a graph. The first four component *viz.*, PC₁, PC₂, PC₃ and PC₄ revealed 31.50%, 14.60%, 13.10% and 11.40% of variations among the studied parameters respectively (Table 5; Fig.4a). The first four main PCAs are extracted from the complicated twelve PCA components, the total cumulative variance of these first four principal components (PC₁, PC₂, PC₃ and PC₄) account for 70.60% of the total variation. In literature similar results were reported for PCA analysis from Singh et al. [55].

The eigenvectors decreased significantly from PC₁ (3.77) to PC₅ (0.86), it indicates that decrease in the eigenvalues after PC₅, the remaining principal components did not described much variation, thus only the first four PCs were considered which explaining much of the variation for the studied population. Elbow type with semi curve line is obtained after PC₅ tended to straight with minute difference observed in each PC and from the graph, it is clear that maximum variation was observed in PC₁ in comparison to the other four PCs, therefore the selection of lines for characters under PC₁ may be desirable, further principal components having more than one eigen value

that showed more variation which act as key factor for selection of diverse breeding lines. The principle component with <1 Eigen value should be eliminated due to their minimum contribution towards variability. In literature similar results obtained from the morphological trait evaluation of chilli genotypes as mentioned by Lahbib et al. [50], Hasan et al., [53,54], Farhad et al. [56]. Results from rotated component matrix showed that the PC₁ which accounts for the maximum variability (31.50%) and highly loaded with characters such as IFW (0.464), FD (0.371), TW (0.356), FYP (0.351), FPT (0.308), WPDM (0.26), MC (0.155), FL (0.129), NSF (0.123) and PH (0.120) contributed in positive direction whereas, only the NPF and NPBPP contributed in negative direction as shown in Table 5 and Fig. 5b in variable PCA plot, PC₁ confirmed the maximum variability in association with the following 13 genotypes in the positive direction (LIPSTICK, B.KADDI, B.DABBI, BHOOT JALOKIA, SUM- 17, BCH- 42, PBC- 80, LCA- 310, M- 262, KA2- L, S. SELECTION 1, JCH- 42 and 9608- U), while remaining genotypes contributed in negative association to PC₁ (Table 6; Fig. 5a). It clearly indicated that genotypes belongs to the PC₁ with positive association may be related to the major traits like fruit weight, fruit diameter, seed weight, fruit thickness and finally with the fruit yield thus PC₁ allows for the simultaneous selection of major economic traits with promising genotypes, results were accordance with Singh et al. [55]. Similarly, PC₂ accounted 14.60% of the total variation with 46.06% of cumulative proportion and loaded with the characters such as NSF (0.614) followed by FL (0.450), NPBPP (0.379), NFP (0.283), PH (0.232), FYP (0.192), TW (0.133), MC (0.132), IFW (0.033), while WPDM, FPT and FD contributed in the negative direction. PC₂ confirmed the maximum variability in association with the following 11 genotypes in the positive direction (KBCH- 1, O7- L, HDC- 75- 1, ACB1 L, LIPSTICK, S. SELECTION 2, 5- B, S. SELECTION 1, ENT- 1, RAJPUT and SUM- 17), while remaining genotypes contributed in negative association to PC₂ (Table 6; Fig. 5a). It clearly indicated that genotypes belongs to the PC₂ with positive association were governed with major traits such as NSF, FL, NPBPP, NFP, PH, FYP and TW so on, PC₃ revealed 13.10% of the total variation with 59.21% of cumulative proportion and 1.57 of eigen values, it is loaded with the characters such as MC (0.489) followed by WPDM (0.361), NFP (0.356), PH (0.322), FYP (0.204),IFW (0.107) and TW (0.063), while, NSF, NPBPP, FD, FPT and FL contributed in the

negative direction to PC₃, it is confirmed the maximum variability from the 14 genotypes such as RAJPUT, KA2- L, SITARA, JCH- 42, BCH- 42, S. SELECTION 1, S. SELECTION 2, S. SELECTION 3, O7- L, LCA- 310, P3, LCA- 960 and M- 262 while remaining genotypes contributed in negative association to PC₃. PC₄ revealed 11.40% of the total variation with 72.61% of cumulative proportion and 1.37 of eigen values, it is loaded with the characters such as WPDM (0.52) followed by NFP (0.46), FYP (0.288), FPT (0.221), FL (0.141), IFW (0.013), while, TW, FD, NSF, MC, NPBP and PH contributed in the negative direction to PC₄, it is confirmed the maximum variability from the 17 genotypes such as 5- B, S. SELECTION 2, LCA- 310, JABALPUR LOCAL, S. SELECTION 3, S. SELECTION 1, SITARA, LCA- 960, LIPSTICK, O7- S, O7- L, ACB1 L, BHOOT JALOKIA, JCH- 42, ENT- 1, HDC- 75- 1, ACB1- S while remaining genotypes contributed in negative association to PC₄. PC₅ revealed 7.20% of the total variation with 80.12% of cumulative proportion and 0.86 of eigen values, it is loaded with the characters such as PH (0.642), FPT (0.527), WPDM (0.173), IFW (0.059) and NSF (0.026) while, NFP, FD, FL, FYP, MC, NPBP and TW contributed in the negative direction to PC₅, it is confirmed the maximum variability from the 14 genotypes such as S. SELECTION 2, KBCH- 1, SUM- 17, LCA- 310, S. SELECTION 3, ENT- 1, S. SELECTION 1, JABALPUR LOCAL, LCA- 960, RAJPUT, LIPSTICK, M- 262, RAICHUR BULLET and PBC- 80 while remaining genotypes contributed in negative association to PC₅.

From the study of multiple PCA components resulted in the identification of the promising genotypes with favourable traits, in the Fig. 6 it clearly indicates that S. SELECTION 1 genotype were positive selection which is grouped from the combinations of five PCA components with favourable contribution of the trait individual fruit weight with maximum diversity, three genotypes were favoured (LIPSTICK, LCA- 310 and S. SELECTION 2) from the grouping of four out of five PCAs which contributed more to the diversity of fruit yield per plant, whole plant dry weight and plant height. Similarly eight promising genotypes were identified (SUM- 17, M- 262, JCH- 42, O7- L, ENT- 1, RAJPUT, S. SELECTION 3 and LCA- 960) from three PCAs out of five PCAs grouped for the trait such as test weight, fruit pericarp thickness, moisture content, fruit length, number of seeds per fruits and number of fruits per plant, hence, the traits falling

in these PCs may be given due importance. Eleven genotypes were identified (BHOOT JALOKIA, BCH- 42, PBC- 80, KA2- L, KBCH- 1, HDC- 75- 1, ACB1 L, 5- B, SITARA, RAICHUR BULLET and JABALPUR LOCAL) from two PCAs out of five PCAs grouped which is favored by number of primary branches per plant. Three genotypes including two check varieties such as B.KADDI, B.DABBI and 9608- U were grouped from any one of the PCA from five PCAs which is contributed with maximum diversity of fruit diameter (Fig. 6). Thus the prominent traits combining vs genotypes together in different principal components and contributing towards the explaining the variability and have tendency to remain together, so these traits may be kept into consideration and can be utilized in breeding program for improving chilli genotypes.

Cluster analysis for yield and yield attributing traits in chilli genotypes were grouped into four major clusters. Analysis was carried out for chilli genotypes by using Ward's hierarchical algorithm based on K means clustering on UPGMA method, using software *Pasta 4.0 version* and it is classified 30 chilli genotypes into 4 hierarchy (level) and with optimal number of cluster (Fig. 7b), based on the degree of similarity further the members in one group are more homogeneous than members outside the group genotypes in the same group have narrow genetic diversity, while genotypes in different groups have wide genetic diversity as shown in the Fig. 7A. The genotypes in cluster I consisted of three genotype (LIPSTICK, B. DABBI and B. KADDI), genotypes in cluster II consisted of 7 genotypes namely O7- S, HDC- 75- 1, ACB1L, RAJPUT, KBCH- 1, O7- L and SITARA. Similarly the genotypes in cluster III is grouped into 7 genotypes based on the homogeneity such as ENT- 1, S. SELECTION 3, LCA- 960, 5- B, S. SELECTION 1, LCA- 310 and S. SELECTION 2, in the present study cluster IV has revealed by grouping higher number of genotypes as compared to the remaining cluster (BHOOT JALOKIA, TIWARI, JABALPUR LOCAL, RAICHUR BULLET, P3, ACB1- S, SUM- 17, JCH- 42, KA2- L, M- 262, PBC- 80, BCH- 42 and 9608- U) (Fig.7a), results were in accordance with the Hasan et al. [53,54], Farhad et al. [56]; Geleta et al. [57] also conducted an experiment with twenty- nine diversified genotypes and clustered them based on morphological character. The average inter and intra cluster distance was also calculated for yield and yield attributing traits with four cluster as given in (Table 7). The inter cluster distances were larger

Table 2. Analysis of variance for yield and yield attributing traits in chilli genotypes

Source of variation	df	Mean sum of squares											
		PH	NPBPP	NFP	FD	FL	IFW	NSF	TW	WPDM	MC	FPT	FYP
Genotypes	29	521.93**	0.34**	724.70**	16.69**	16.53**	0.09**	583.05**	1.35**	202.66**	66.72**	0.08**	552.92**
Replication	1	0.00	0.06	2.09	5.51*	8.22**	0.01	8.74	0.00	0.02	16.99*	0.00	1.31
Error	29	2.52	0.04	1.47	0.42	0.20	0.00	5.69	0.03	1.36	2.01	0.01	1.72
CV (5%)		2.18	9.60	1.90	5.45	6.64	8.30	3.05	3.69	2.94	2.14	10.82	2.55
CD (5%)		3.24	0.45	2.47	1.32	0.92	0.12	4.87	0.36	2.38	2.90	0.25	2.68
Sem±		1.12	0.15	0.85	0.45	0.32	0.04	1.68	0.12	0.82	1.00	0.08	0.92

Note 1: PH: Plant height (cm); NPBPP: Number of primary branches per plant; NFP: Number of fruits per plant; FD: Fruit diameter (mm); FL: Fruit length (cm); IFW: Individual fruit weight (g); NSF: Number of seeds per fruit; TW: Test weight (g); WPDM: Whole plant dry matter (g); MC: Moisture content (%); FPT: Fruit pericarp thickness (mm); FYP: Fruit yield per plant (g); CV (5%): Coefficient of variation; CD: Critical difference; Sem±: Standard error of mean

Note 2: *Indicate significance @ 5% level; **Indicate highly significance @ 1% level

Table 3. Genetic plasticity and mean performance of chilli genotypes for yield and yield attributing traits

Traits	Range		Mean (\bar{X})	Coefficient of variation (%)		h^2 BS	GAM
	Min	Max		GCV	PCV		
PH	50.00	111.00	72.71	22.16	22.26	99.04	45.43
NPBPP	2.00	3.00	2.31	16.57	19.14	74.90	29.54
NFP	21.85	127.00	63.80	29.80	29.86	99.60	61.27
FD	5.45	20.80	11.89	23.97	24.58	95.09	48.15
FL	1.55	13.56	6.81	41.93	42.45	97.55	85.32
IFW	0.29	1.34	0.75	27.72	28.93	91.81	54.72
NSF	41.00	119.50	78.23	21.71	21.93	98.07	44.30
TW	3.70	7.60	4.81	16.90	17.30	95.44	34.02
WPDM	13.48	55.50	39.59	25.33	25.50	98.67	51.84
MC	50.32	78.04	66.35	8.57	8.83	94.13	17.13
FPT	0.69	1.65	1.15	15.91	19.24	68.36	27.10
FYP	30.70	87.00	51.45	32.26	32.36	99.38	66.25

Note 1: PH: Plant height (cm); NPBPP: Number of primary branches per plant; NFP: Number of fruits per plant; FD: Fruit diameter (mm); FL: Fruit length (cm); IFW: Individual fruit weight (g); NSF: Number of seeds per fruit; TW: Test weight (g); WPDM: whole plant dry matter (g); MC: Moisture content (%); FPT: Fruit pericarp thickness (mm); FYP: Fruit yield per plant (g)

Note 2: GCV: Genotypic coefficient of variance; PCV: Phenotypic coefficient of variance; h^2 : Heritability (%); GAM: genetic advance percent mean

Note 3	High	Moderate	Low	Proposed by
GCV & PCV	> 20%	10 to 20%	<10%	Sivasubramanian and Madhavamenon(1973)
GAM	> 20%	10 to 20	<10%	Johnson et al. (1955).
h^2	> 60%	30 to 60	0- 30%	

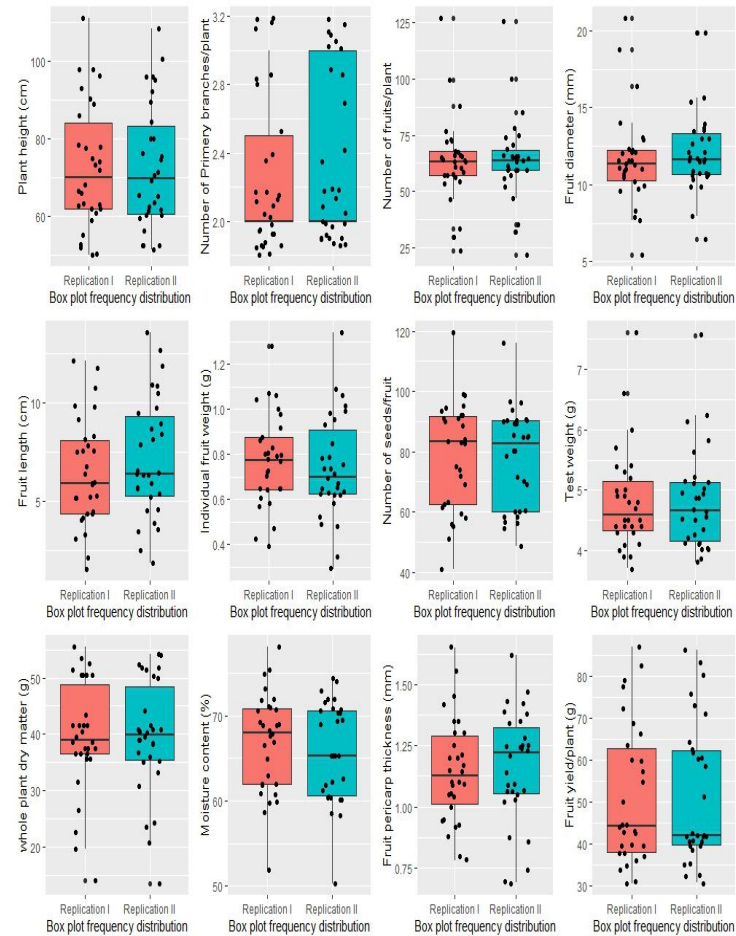


Fig. 1. Box plots depicting the frequency distribution for yield and yield attributing traits in chilli genotypes

Note:

*Red colour box showing the frequency distribution of genotypes for replication- I
Blue colour box showing the frequency distribution of genotypes for replication- II*

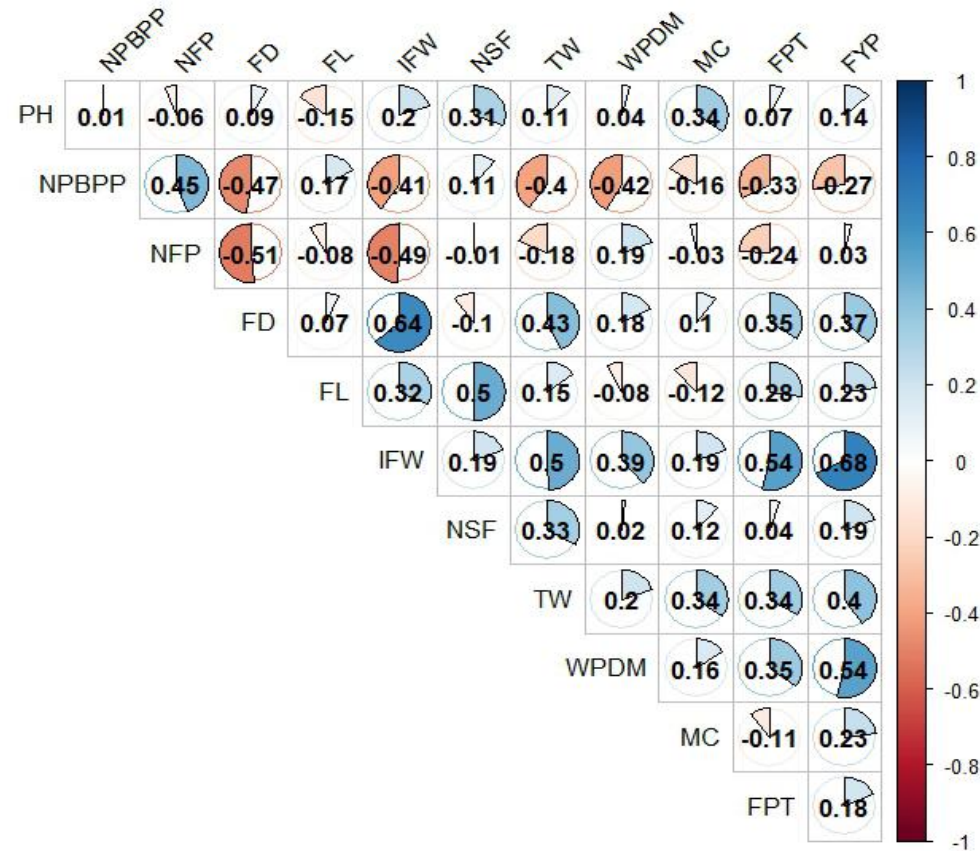


Fig. 2. Phenotypic correlation coefficient among the 30chilli genotypes for yield and yield attributing traits

Note 1: PH: Plant height (cm); NPBPP: Number of primary branches per plant; NFP: Number of fruits per plant; FD: Fruit diameter (mm); FL: Fruit length (cm); IFW: Individual fruit weight (g); NSF: Number of seeds per fruit; TW: Test weight (g); WPDM: whole plant dry matter (g); MC: Moisture content (%); FPT: Fruit pericarp thickness (mm); FYP: Fruit yield per plant (g); Significance level: 0.05 (*) = 0.355; 0.01 (**) = 0.455

Table 4. Path coefficient analysis showing direct and indirect effect for yield and yield attributing traits in chilli genotypes

Traits	PH	NPBPP	NFP	FD	FL	IFW	NSF	TW	WPDM	MC	FPT	FYP	DE	r ² value with FYP
PH		- 0.0284	- 0.0134	0.0294	0.0566	0.0735	0.0334	0.0194	0.0901	- 0.0118	- 0.0303	0.1304	0.2398	0.140
NPBPP	- 0.0033		- 0.0011	0.0003	0.0002	0.0016	0.0008	0.0022	- 0.0013	0.0063	0.0015	0.0434	0.028	- 0.270
NFP	- 0.0138	- 0.0098		- 0.133	- 0.1192	0.0017	- 0.0339	0.0498	- 0.0135	- 0.0719	- 0.0144	0.0494	0.2467	0.030
FD	0.0063	0.0005	- 0.0275		0.0269	- 0.0072	0.0181	0.0085	0.0075	0.0172	0.0012	0.2846	0.0511	0.370*
FL	0.084	0.0029	- 0.1721	0.1878		0.0489	0.151	0.1363	0.1031	0.1476	0.0842	0.6004	0.3562	0.230
IFW	0.0244	0.0047	0.0005	- 0.0112	0.0109		0.027	0.0019	0.0101	0.0026	0.0382	0.1668	0.0798	0.680**
NSF	- 0.0176	- 0.0036	0.0174	- 0.0448	- 0.0536	- 0.0429		- 0.027	- 0.0397	- 0.0427	- 0.0184	0.3223	- 0.1264	0.190
TW	0.0173	0.0168	0.0431	0.0356	0.0817	0.0051	0.0457		0.0316	0.0846	- 0.011	0.4961	0.2136	0.400**
WPDM	- 0.0028	0.0003	0.0004	- 0.0011	- 0.0021	- 0.0009	- 0.0023	- 0.0011		0.0003	0.001	0.226	- 0.0074	0.540**
MC	0	0.0001	- 0.0002	0.0002	0.0002	0.00	0.0002	0.0002	0		0.0001	0.2006	0.0006	0.230
FPT	- 0.113	0.0489	- 0.052	0.0208	0.2115	0.4289	0.1301	- 0.0461	- 0.1266	0.2205		0.2066	0.8946	0.180
FYP	- 0.118	- 0.08	0.466	0.149	- 0.014	0.731	0.13	0.115	0.032	- 0.035	- 0.028		0.912	1.00

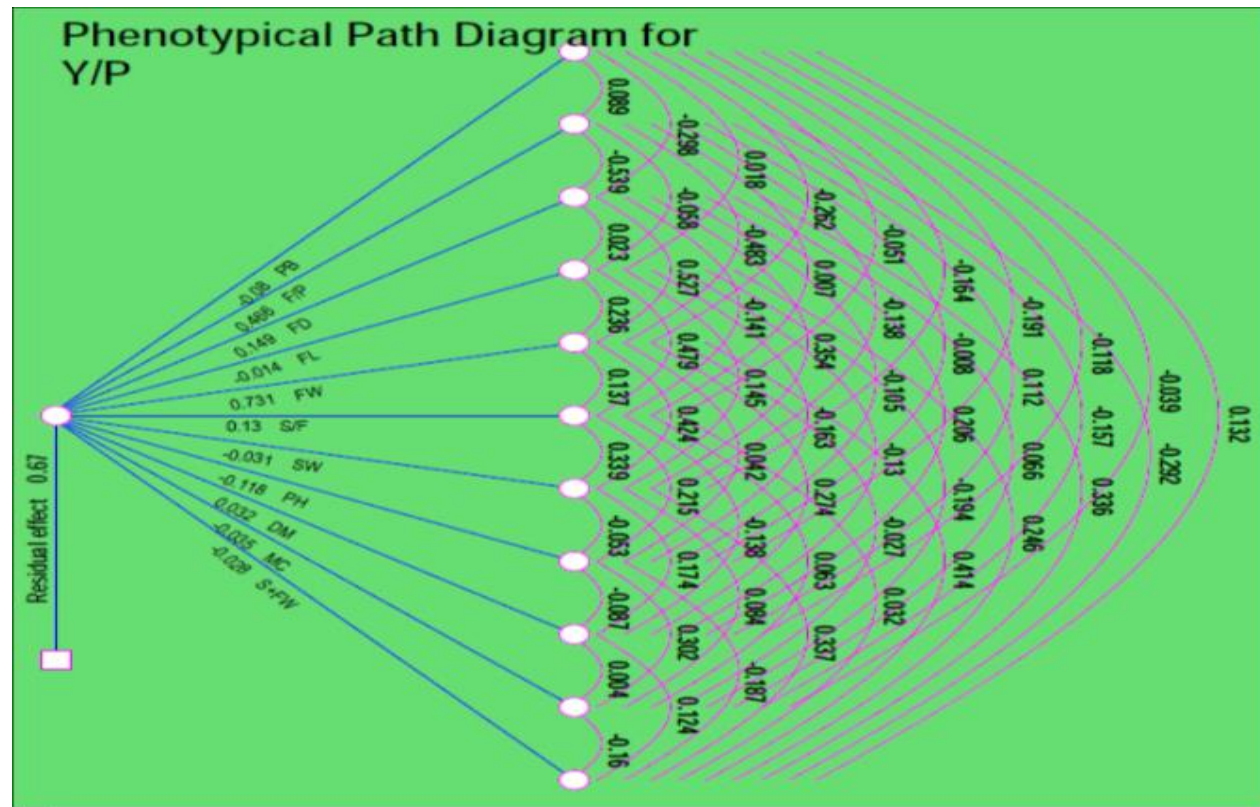
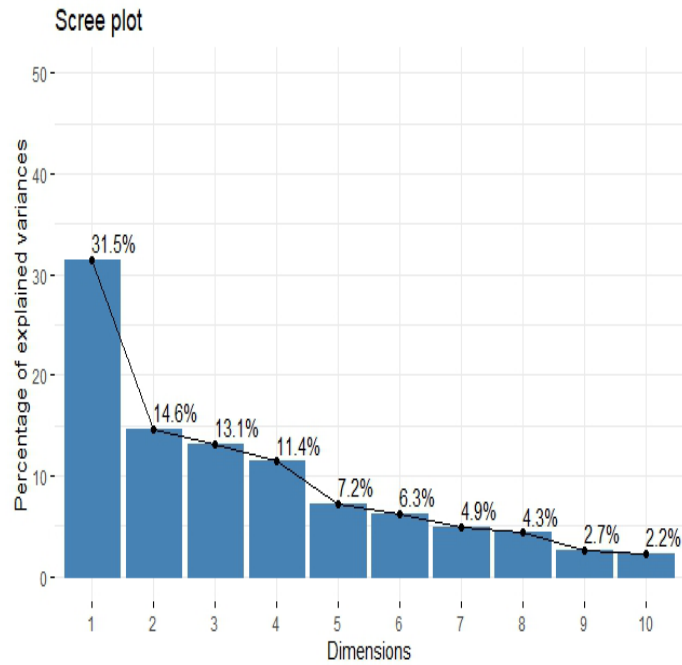


Fig. 3. Path coefficient analysis showing direct and indirect effect for yield and yield attributing traits in chilli genotypes

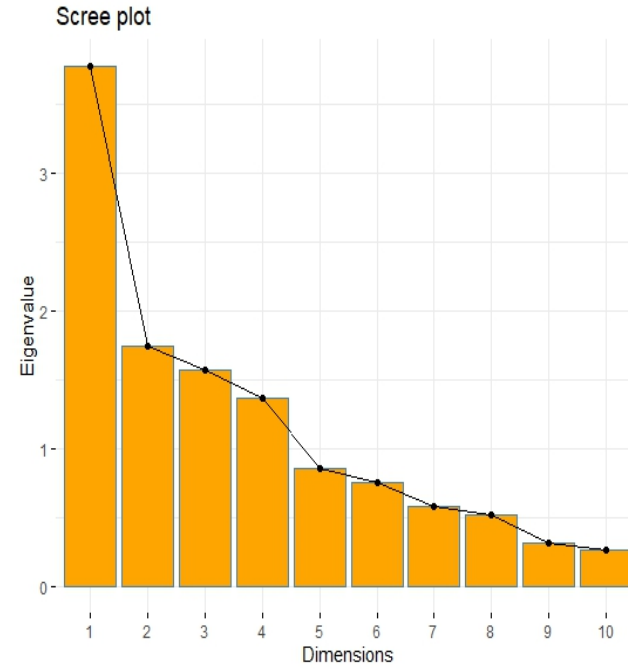
Note 1: PH: Plant height (cm); NPBP: Number of primary branches per plant; NFP: Number of fruits per plant; FD: Fruit diameter (mm); FL: Fruit length (cm); IFW: Individual fruit weight (g); NSF: Number of seeds per fruit; TW: Test weight (g); WPD: whole plant dry matter (g); MC: Moisture content (%); FPT: Fruit pericarp thickness (mm); FYP: Fruit yield per plant (g); Residual effect (RE) = 0.67; r^2 with FYP: Phenotypic correlation with fruit yield; Significance level: 0.05 (*) = 0.355; 0.01 (**) = 0.455

Table 5. Eigen values, Per cent variance, cumulative proportion and component loading of yield and yield attributing traits in chilli genotypes

Traits	PC₁	PC₂	PC₃	PC₄	PC₅
PH	0.120	0.232	0.322	- 0.437	0.642
NPBPP	- 0.327	0.379	- 0.098	- 0.003	- 0.080
NFP	- 0.240	0.283	0.356	0.460	- 0.002
FD	0.371	- 0.259	- 0.128	- 0.136	- 0.101
FL	0.129	0.450	- 0.497	0.141	- 0.151
IFW	0.464	0.033	0.107	0.013	0.059
NSF	0.123	0.614	- 0.097	- 0.158	0.026
TW	0.356	0.133	0.063	- 0.115	- 0.324
WPDM	0.260	- 0.028	0.361	0.520	0.173
MC	0.155	0.132	0.489	- 0.346	- 0.305
FPT	0.308	- 0.054	- 0.246	0.221	0.527
FYP	0.351	0.192	0.204	0.288	- 0.198
Eigen value	3.77	1.75	1.57	1.37	0.86
Proportion of variance	31.50	14.60	13.10	11.40	7.20
Cumulative proportion	13.48	46.06	59.21	72.61	80.12



4a. Scree plot for PEV



4b. Scree plot for Eigenvalue

Fig. 4. Scree plot showing percentage of explained variance (PEV) and Eigen values for number of components corresponding to the yield and yield attributing traits in chilli genotypes
Note: 1 to 10 number = component numbers

Table 6. Contribution of Genotypes to the Individual PCAs

SI.NO.	Genotypes	PC ₁	PC ₂	PC ₃	PC ₄	PC ₅
1	BHOOT JALOKIA	1.80562	- 3.4157	- 0.535	0.40707	- 0.2438
2	TIWARI	- 1.4712	- 1.2346	- 0.9006	- 0.8273	- 0.5223
3	BCH- 42	1.6664	- 0.271	1.38934	- 1.175	- 0.827
4	M- 262	0.68183	- 0.2923	0.22809	- 1.148	0.12948
5	KBCH- 1	- 0.7165	2.18606	- 0.1102	- 1.4501	1.49135
6	SUM- 17	1.70498	0.07499	- 1.1621	- 2.9575	1.42844
7	LIPSTICK	5.81074	0.58255	- 0.5154	0.81318	0.42119
8	HDC- 75- 1	- 2.4196	1.64369	- 2.846	0.05156	- 0.5492
9	ACB1 L	- 1.8695	1.20415	- 1.9886	0.47511	- 0.4871
10	RAICHUR BULLET	- 1.2187	- 2.761	0.13185	- 0.2883	0.04997
11	5- B	- 0.4059	0.31971	- 0.3614	2.08876	- 0.7997
12	O7- S	- 3.4722	- 0.2402	- 2.031	0.71923	- 0.0334
13	P3	- 0.1488	- 1.0422	0.46686	- 0.0689	- 1.5106
14	O7- L	- 2.164	1.74762	0.74585	0.53192	- 0.7516
15	RAJPUT	- 3.24	0.10394	2.18791	- 2.7877	0.58236
16	ENT- 1	- 0.185	0.18754	- 0.3391	0.16898	1.04244
17	S. SELECTION 1	0.42898	0.22706	1.29732	0.88884	0.8485
18	LCA- 310	0.97511	- 0.2574	0.54285	1.63307	1.37605
19	S. SELECTION 2	- 0.0155	0.45421	1.07913	1.64034	1.71941
20	ACB1- S	- 0.7056	- 1.8932	- 0.004	0.00884	- 0.9421
21	S. SELECTION 3	- 0.8994	- 0.3569	0.82	0.9387	1.19544
22	PBC- 80	1.01187	- 0.5868	- 1.2566	- 1.3127	0.01636
23	LCA- 960	- 0.8962	- 0.2732	0.41495	0.81902	0.73774
24	JABALPUR LOCAL	- 0.5131	- 1.6901	- 1.0015	0.96302	0.82504
25	JCH- 42	0.41718	0.04361	1.47253	0.20717	- 0.79
26	SITARA	- 1.1498	1.88385	2.04834	0.82216	- 0.7549
27	KA2- L	0.51317	0.24885	2.10527	- 0.2879	- 1.3575
28	9608- U	0.30037	0.45215	- 0.1348	- 0.4968	- 0.6503
29	B.DABBI	3.05374	2.06129	- 1.1032	- 0.0659	- 0.6268
30	B.KADDI	3.1211	0.89328	- 0.6407	- 0.3109	- 1.0176

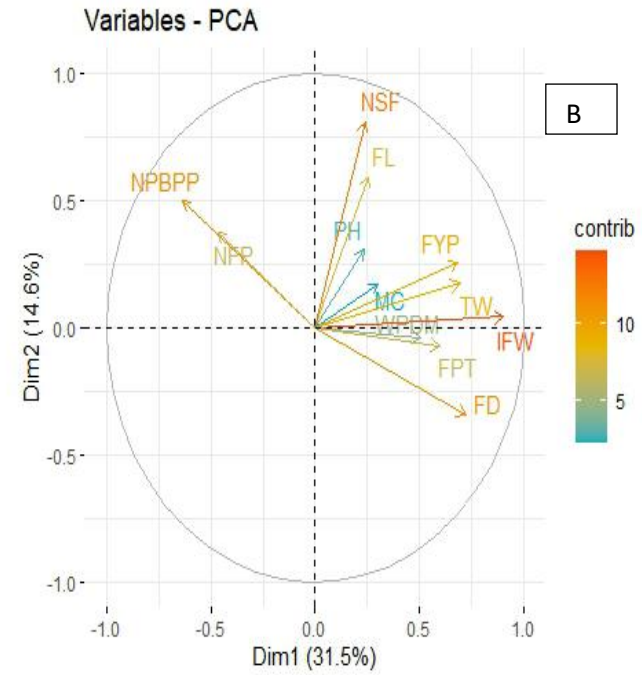
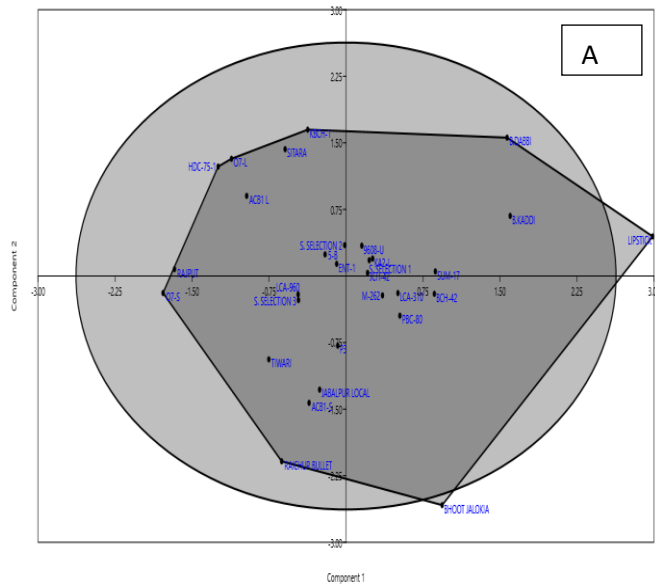


Fig. 5. a and b showing the PCA Biplot for genotype clustering and PCA variable showing the contribution of the traits in PC₁ and PC₂ on the axes

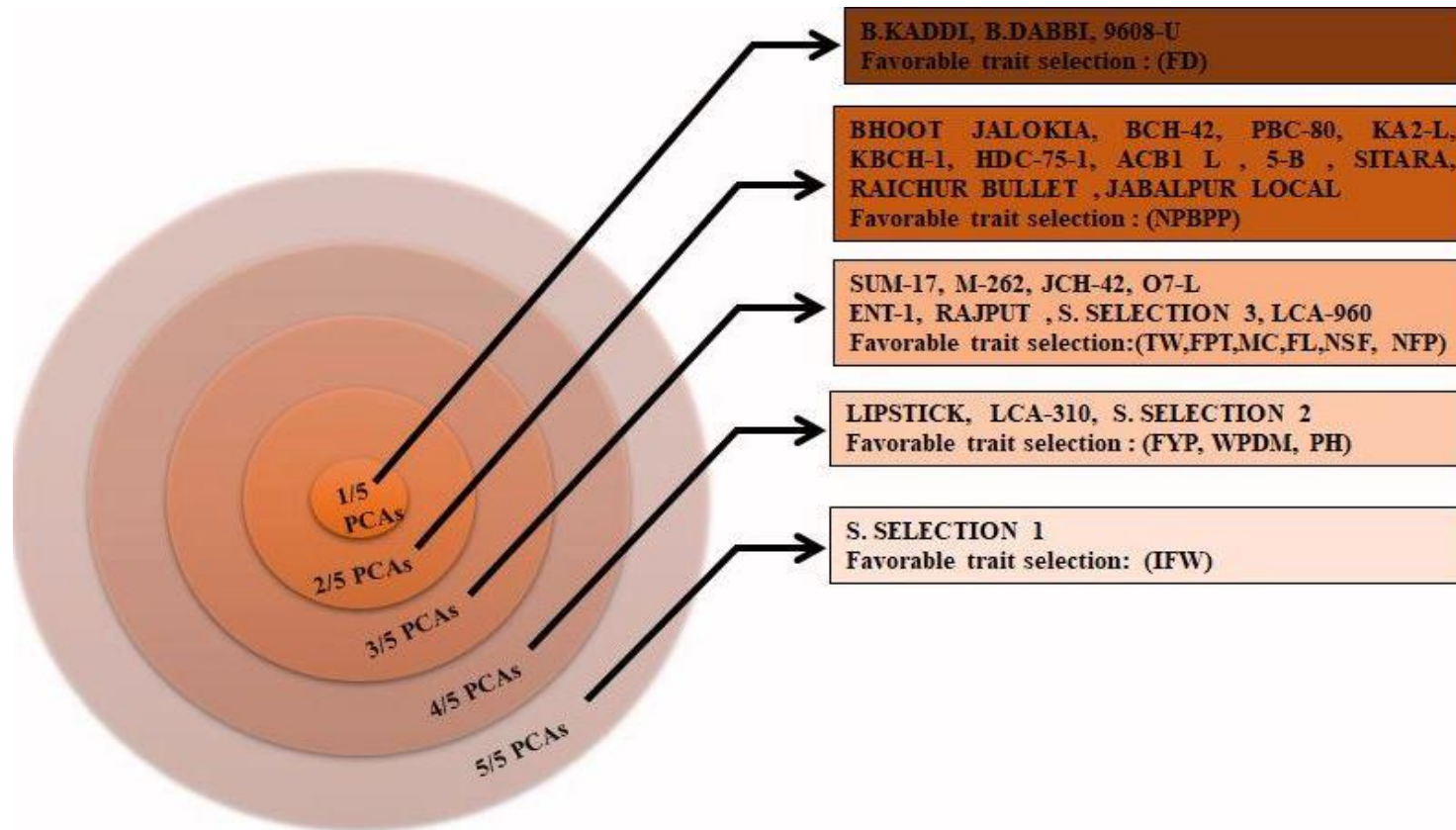
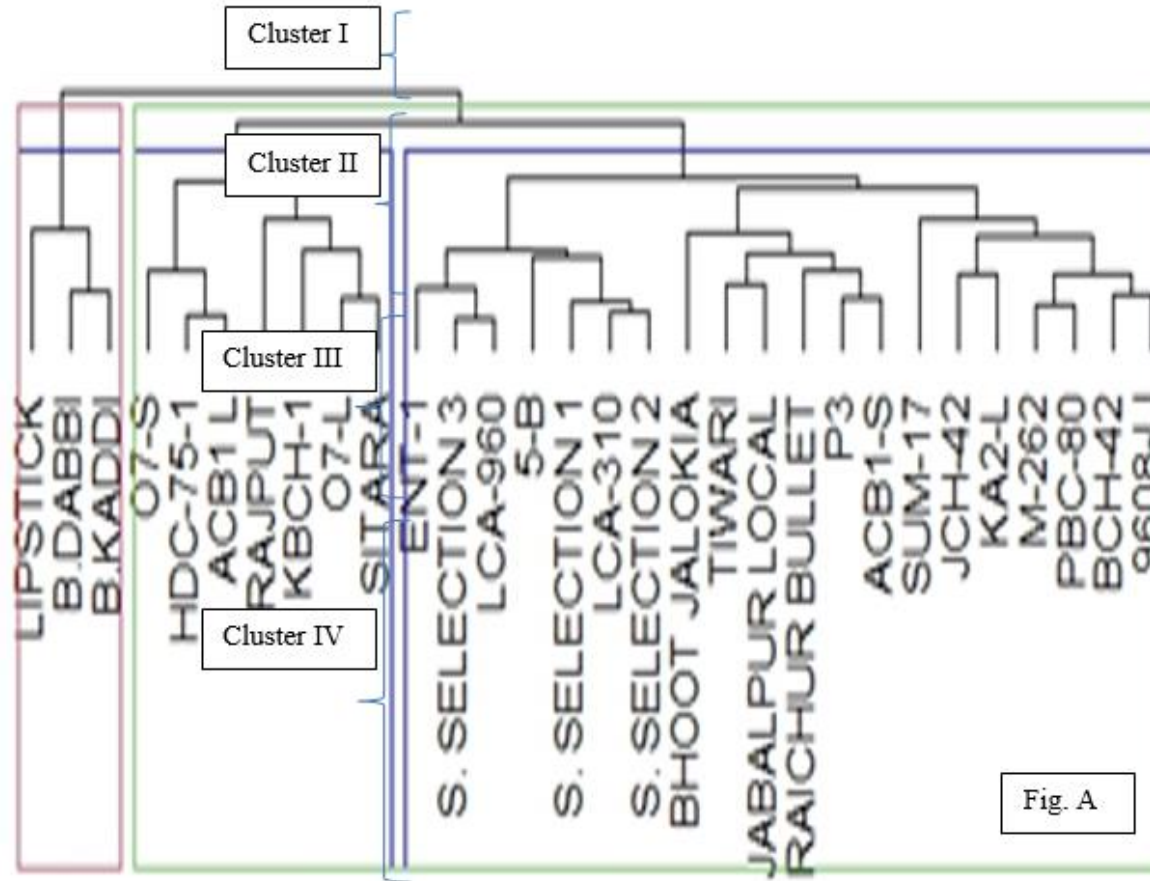


Fig. 6. Selection of promising genotypes VS traits from multiple PCAs

Note:

- 1/5PCAs: Selection of favourable genotypes Vs Trait based on any one PCAs from five PCAs
- 2/5PCAs: Selection of favourable genotypes Vs Traits based on any two PCAs from five PCAs
- 3/5PCAs: Selection of favourable genotypes Vs Traits based on any three PCAs from five PCAs
- 4/5PCAs: Selection of favourable genotypes Vs Traits based on any four PCAs from five PCAs
- 5/5PCAs: Selection of favourable genotypes Vs Traits based on five out of five PCAs



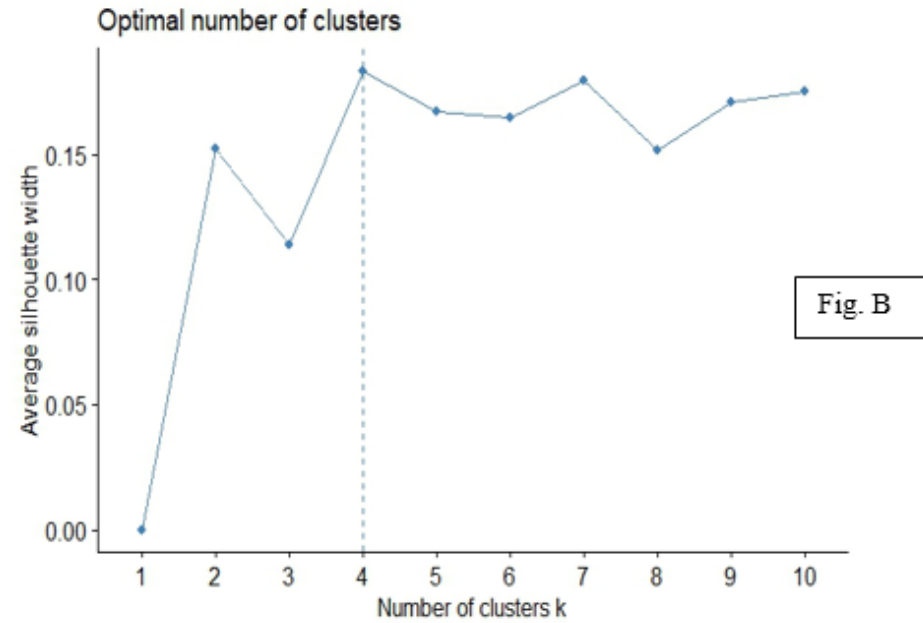


Fig. 7. (a&b): Relationship among the 30 chilli genotypes based on yield and yield attributing traits and using K means clustering on UPGMA method

Table 7. Average intra (Bold) and inter cluster (Un- bold) distance of chilli genotypes for yield and yield attributing traits

Clusters	I	II	III	IV	V	VI	VII
I	1.023	461.880	587.740	491.980	781.080	687.700	906.570
II		0.598	187.080	1155.15	1650.72	1191.33	1018.27
III			0.684	1165.61	1939.05	1166.57	1473.29
IV				0.450	352.620	594.080	1461.12

Table 8. Cluster wise mean performance for yield and yield attributing revealed by 30 chilli genotypes

Cluster	No. of genotypes	Genotypes include in the cluster	PH (cm)	NPBPP	NFP	FD (mm)	FL (cm)	IFW (g)	NSF	TW (g)	WPDM (g)	MC (%)	FPT (mm)	FYP (g)
I	3	Lipstick, B. Dabbi and B. Kaddi	80.14	2.58	63.58	11.2	6.4	0.78	81.96	4.85	37.58	68.17	1.14	53
II	7	07- S, HDC- 75- 1, ACB1L, Rajput, KBCH- 1, 07- L and Sitara	58.55	2.5	63	9.95	12.15	0.57	98.5	3.7	22.5	63.6	1.05	30.7
III	7	Ent- 1, S. Selection- 3, LCA- 960, 5- B, S. Selection- 1, LCA- 310 and S. Selection- 2	75.8	3	57.5	7.65	7.8	0.47	59.5	3.95	13.5	71.75	1	31.15
IV	13	Bhoot Jalokia, Tiwari, Jabalpur local, Raichur Bullet, P3, ACB1- 5, SUM- 17, JCH- 42, KA2- L, M- 262, PBC- 80, BCH- 42 and 9608- U	64.6	2.5	72	16.41	1.55	0.42	51	4.45	38.5	70.9	1.09	34.95

PH: Plant height (cm); NPBPP: Number of primary branches per plant; NFP: Number of fruits per plant; FD: Fruit diameter (mm); FL: Fruit length (cm); IFW: Individual fruit weight (g); NSF: Number of seeds per fruit; TW: Test weight (g); WPDM: whole plant dry matter (g); MC: Moisture content (%); FPT: Fruit pericarp thickness (mm); FYP: Fruit yield per plant (g)

than the intra cluster distances. The inter- cluster distance was maximum between clusters III and IV (1939.05) indicating wide genetic diversity between these two clusters followed by the distance between cluster II and V (1650.72), cluster III and cluster VII (1473.29) and cluster IV and cluster VII (1461.12). Genotypes from these four clusters if involve in hybridization may occur a wide spectrum of segregating population as genetic diversity is very distinct among the groups. The selection of diverge genotype from cluster would produce a broad spectrum of variability for morphological traits studied which may enable further selection and improvement (Table 7). The minimum inter- cluster distance was observed between cluster I and cluster II (461.880) followed by cluster I and cluster IV (491.080) and cluster II and cluster III (187.080) indicating that the genotypes of these clusters were genetically close.

Cluster mean value of 12 different characters shown in Table 8. Difference in cluster means existed for almost all the characters studied. Highest mean value for NSF (81.96) followed by PH (80.14), MC (68.17), NFP (63.58), FYP (53.00), WPDM (37.58), FD (11.20), FL (6.40) and the genotypes belongs to cluster I such as Lipstick, B. Dabbi and B. Kaddi revealed more diversity for the seed number, height, moisture content and number of fruits per plant, similarly for cluster II revealed higher diversity for NSF, MC, NFP and PH. Cluster III has shown higher diversity for PH (75.80), followed by MC (71.75), NSF (59.50), NFP (57.50) and FYP (31.15) and cluster IV has the more diversity for NFP (72.00) followed by MC (70.90), PH (64.60), NSF (51.00), WPDM (38.50) and FYP (34.95), Cluster IV possessed genotypes with maximum number of fruits coupled with dwarf plant stature indicating selection of genotypes from these cluster for future chilli breeding program have positive impact for short plant type, and number of fruits. Cluster I had the genotypes that showed lowest mean value for almost all the characters studied indicating selection of genotypes from these cluster for future chilli breeding program have no positive impact on yield attributing traits. In literature similar results were obtained from Mubarak Begum [58] and Prabhudeva [59-70].

4. CONCLUSIONS

Variability among the base generation of parental lines creates more scope for selecting the targeted genotypes to develop the recombinant

type and for heterosis breeding. In the present study, information was gathered for 30 chilli genotypes regarding morphological and yield-related traits. Among the studied characters fruit pericarp thickness, fruit length, number of fruits per plant, fruit diameter and fruit yield per plant are the most trustworthy yield components traits as a breeder one should be given more weightage for these traits, based on the existing variability with strong association and path, PCA and diversity analysis revealed as preposition selection criteria in chilli breeding programs as a horticultural traits. The present study revealed there is enough scope for future study involving multi- location trials for the promising cultivars like., LIPSTICK, B.KADDI, B.DABBI, BHOOT JALOKIA, SUM- 17, BCH- 42, PBC- 80, LCA- 310, M- 262, KA2- L, S. SELECTION 1, JCH- 42 and 9608- U so these genotypes serves as a donor for further breeding programme to develop superior cultivars.

ACKNOWLEDGEMENT

The authors are thankful to science and engineering research board (SERB), DST, Govt. of Indian as the work is funded by research grant SB/EMEQ/2019/176.

COMPETING INTERESTS

Authors have declared that no competing interests exist.

REFERENCES

1. Tilahun T, Bezie Y, Petros Y, Dessalegn Y, Taye M. Correlation and path coefficient analysis of green pod yield and yield attributing traits of chili (*Capsicum annum* L.) genotypes in Ethiopia. All Life. 2022;15(1):203-210.
2. Cardoso R, Ruas CF, Giacomini RM, Ruas PM, Ruas EA, Barbieri RL, Rodrigues RA, Goncalves LS. Genetic variability in brazilian capsicum baccatum germplasm collection assessed by morphological fruit traits and AFLP markers. PloS one. 2018;13(5):0196468.
3. Azlan A, Sultana S, Huei CS, Razman MR. Antioxidant, anti-obesity, nutritional and other beneficial effects of different chili pepper: a review. Molecules. 2022;27(3):898.
4. Paul S, Das A, Sarkar NC, Ghosh B. Collection of chilli genetic resources from

- different geographical regions of West Bengal, India. International journal of Bio-resource and Stress Management. 2013;4(2):147-153.
5. Mongkolporn O, Taylorpaul WJT. Capsicum wild crop relatives: Genomic and breeding resources, Vegetables. 2011;Chapter-4.
 6. Kadwey S, Dadiga A, Prajapati S. Genotypes performance and genetic variability studies in hot chilli (*Capsicum annum* L.). Indian Journal of Agricultural Research. 2016;50(1):56-60.
 7. FAO. World food and agriculture- statistical yearbook; 2021. Rome.
Available:<https://doi.org/10.4060/cb4477>
 8. Ashoka N, Kareem MA, Shashidhara N, Raju R, Harshavardhan M, Hongal S, Chandan K. Dynamics of Chilli (*Capsicum annum* L.) Production in Karnataka: An economic analysis. Indian journal of economics and development. 2022;18(2): 374-380.
 9. Choudhary BS, Samadia DK. Variability and character association in chilli landraces and genotypes under arid environment. Indian J Hortic. 2004;61:132–136.
 10. Kannan D, Singh DK, Singh SK, Palanisamy A. Genetic variability and agronomic performance studies in chilli (*Capsicum annum* L.). SAARC Journal of Agriculture. 2016;14(2):56-62.
 11. Yatung T, Dubey RK, Singh V, Upadhyay G. Genetic diversity of chilli (*Capsicum annum* L.) genotypes of India based on morpho-chemical traits. Australian journal of crop science. 2014;8(1):97-102.
 12. Patel AS, Sasidharan N, Vala AG. Genetic relation in *Capsicum annum* [L.] cultivars through micro satellite markers: SSR and ISSR. Electronic Journal of Plant Breeding. 2011;2(1):67-76.
 13. Yumnam JS, Tyagi W, Pandey A, Meetei NT, Rai M. Evaluation of genetic diversity of chilli landraces from North Eastern India based on morphology, SSR markers and the Pun1 locus. Plant Molecular Biology Reporter. 2012;30:1470-1479.
 14. Iqbal S, Tak HI, Inam A, Inam A, Sahay S, Chalkoo S. Comparative effect of wastewater and groundwater irrigation along with nitrogenous fertilizer on growth, photosynthesis and productivity of chilli (*Capsicum annum* L.). Journal of Plant Nutrition. 2015;38(7):1006-1021.
 15. Hammer Q, Harper DAT, Ryan PD, PAST: Paleontological statistics software version 4.03 package for education and data analysis. Palaeontologia Electronica. 2001; 4(1):1-9.
 16. Pradhan K, Nandi A, Senapati N, Sarkar S, Patnaik A, Pandey G. Genetic variability and character association for quantitative traits in Chilli (*Capsicum annum* L.). Environment & Ecology. 2016;34(4D): 2580-2584.
 17. Usman MG, Rafii MY, Ismail MR, Malek MA, Abdul LM. Heritability and genetic advance among chili pepper genotypes for heat tolerance and morphophysiological characteristics. The Scientific World Journal; 2014.
 18. Dhal N, Prasad VM, Topno SE, Bahadur V, Marker, S. Varietal trails of chilli (*Capsicum spp*) varieties on the basis of growth and yield in prayagraj agroclimatic condition. The Pharma Innovation Journal. 2021; 10(10):424-426.
 19. Khan MMH, Rafii MY, Ramlee SI, Jusoh M, Mamun M. Path-coefficient and correlation analysis in Bambara groundnut (*Vigna subterranea* [L.] Verdc.) accessions over environments. Scientific reports. 2022;12(1):245.
 20. Jyothi KU, Kumari SS, Ramana CV. Variability studies in chilli (*Capsicum annum* L.) with reference to yield attributes. Journal of Horticultural Sciences. 2011;6(2):133-135.
 21. Pandit MK, Adhikary S. Variability and heritability estimates in some reproductive characters and yield in chilli (*Capsicum annum* L.). International Journal of Plant & Soil Science. 2014;3(7):845-853.
 22. Maurya AK, Kushwaha ML, Singh BK. Genetic studies in chilli (*Capsicum annum* L.). The international journal of science & technology. 2015;3(8):289-290.
 23. Pandiyaraj P, Genetic variability, heritability and genetic gain for quantitative and qualitative traits in chilli (*Capsicum annum* L.). International Journal of Agriculture Sciences. 2017;9(14):4081-4083.
 24. Markam D, Sharma D. Assessment of genetic variability, heritability and genetic advance for yield and yield attributing traits in chilli (*Capsicum annum* L.). The

- Pharma Innovation Journal. 2022;11(10): 471-474.
25. Munshi AD, Behera TK. Genetic variability, Heritability and genetic advance for some traits in chilli. Vegetable Science. 2000; 27:39-41.
 26. Munshi AD, Behera TK, Singh G. Correlation and path coefficient analysis in chilli. Indian J. Hort. 2000;57(2):157-159.
 27. Sreelathakumary I, Manju PR. Genetic variability, heritability and genetic advance in hot chilli (*Capsicum chinense* Jacq.). J. Tropical Agric. 2002;40:4 -6.
 28. Sreelathakumary I, Rajamony, L. Variability, heritability and genetic advance in chilli (*Capsicum annum* L.). J. Tropical Agric. 2004;42(1 -2):35-37.
 29. Samadia SK. Genetic variability studies in chilli germplasm under hot arid eco - system. Indian J. Hort. 2007;64(4):477-479.
 30. Ukkund KC, Patil MP, Madatageri M. Variability studies in green chilli. (*Capsicum annum* L.). Karnataka J. Agric. Sci. 2007;20(1):102-104.
 31. Tembhurne BV, Revnappa, Kuchanur PH. Varietal performance, genetic variability and correlation studies in chilli (*Capsicum annum* L.). J. Agric. Sci. 2008;21(4):541-543.
 32. Gupta MA, Singh D, Kumar A. Genetic variability, genetic advance and correlation in chilli (*Capsicum annum* L.). Indian J. Agric. Sci. 2009;79(3):221-223.
 33. Sharma VK, Semwal CS, Uniyal SP. Genetic variability and character association analysis in bell pepper. (*Capsicum annum* L.). J. Hort. & Forestry. 2010;2(3):58-65.
 34. Kumar D, Bahadur V, Rangare SBA, Singh D. Genetic variability, heritability and correlation studies in chilli (*Capsicum annum* L.). Hort. Flora Research Spectrum. 2012;1(3):248-252.
 35. Usman MG, Rafii MY, Martini MY, Oladosu Y, Kashiani P. Genotypic character relationship and phenotypic path coefficient analysis in chili pepper genotypes grown under tropical condition. Journal of the science of food and agriculture. 2017;97(4):1164–1171.
 36. Patel DK, Patel BR, Patel JR, Kuchhadiya GV. Genetic variability and character association studies for green fruit yield and quality component traits in chilli (*Capsicum annum* var. longum (dc.) sendt.). Electronic Journal of Plant Breeding. 2015;6(2):472-478.
 37. Farwah S, Hussain K, Rizvi S, Hussain SM, Rashid M, Saleem S, Genetic variability, heritability and genetic advance studies in chili (*Capsicum annum* L.) genotypes. International Journal of Chemical Studies. 2020;8(3):1328-1331.
 38. Lakshmi E, Gasti DV, Mulge R. Character interrelationship of yield and yield components in F2 generation of Tomato (*Solanu mlycopersicum* L.). Int. J. Curr. Microbiol. App. Sci. 2017;6(11):2351-2359.
 39. Luitel BP, Yoon CS, Kang WH. Correlation and path coefficient analysis for fruit yield and quality characters in segregating population of mini-paprika (*Capsicum annum* L.). J. of Agric., Life and Envir. Sci. 2013;25:1-7.
 40. Misangu RN, Azmio AA, Reuben S, Kusolwa PM, Mulungu LS. Path coefficient analysis among components of yield in bambara groundnut (*Vigna subterranea* L. Verdc) Landraces under Screen House Conditions. J Agron. 2007;6(2):317-323.
 41. Ajjapplavara PS, Patil SS, Hosamani RM, Patil AA, Gangaprasad S. Correlation and path coefficient analysis in Chilli. Karnataka Journal of Agricultural Science. 2005;18(3):748-751.
 42. Kumari S, Jyothi U, Reddy C, Srihari SS, Sankar R. Character association in paprika (*Capsicum annum* L.) Journal of Spices and Aromatic Crops. 2011;20(1):43–47.
 43. Pujar UU, Tirakannanavar S, Jagadeesha RC, Gasti VD, Sandhyarani N. Genetic variability, heritability, correlation and path analysis in chilli (*Capsicum annum* L.). International Journal of Pure & Applied Bioscience. 2017;5(5):579-586.
 44. Kumar D, Kumar R, Kumar S, Bhardwaj ML, Thakur MC, Kumar R, Thakur KS, Dogra BS, Vikram A, Thakur A, Kumar P. Genetic variability, correlation and path coefficient analysis in tomato. International Journal of Vegetable Science. 2013;19(4):313-323.
 45. Jabeen N, Sofi PA, Wani SA. Character association in Chilli (*Capsicum annum* L.) Rev UDO Agric. 2009;9(3):487-490.
 46. Sabina I, Singh RV. Short communication correlation and path analysis in sweet pepper (*Capsicum annum* L.). Veg Sci. 2009;36(1):128-130.

47. Maga TJ, Uguru MJ, Ogonna PE. Variability and association studies on yield and yield characters in aromatic nsukka yellow pepper (*Capsicum annuum* L.). Inter. J. of Plant Breeding. 2013;7:90-95.
48. Bijalwan P, Mishra AC. Correlation and path coefficient analysis in chilli (*Capsicum annuum* L.) for yield and yield attributing traits. International journal of science and research. 2013;5(3):1589-1591.
49. Soares RS, Silva HW, Willame C, Santos, Vale LSR, Correlations and path analysis for fruit yield in pepper lines (*Capsicum chinense* L.). Comunicata Scientiae. 2017; 8(2):247-255.
50. Lahbib K, Bnejdi F, Mohamed EG. Genetic diversity evaluation of pepper (*Capsicum annuum* L.) in Tunisia based on morphologic characters. African Journal of Agricultural Research. 2012;7(23): 3413-3417.
51. Kadwey S, Ashwini D, Sunil P, Telugu RK. Correlation and path co-efficient analysis of quantitative and qualitative traits in chilli (*Capsicum annuum* L.). The Bioscan (Supplement on Genetics and Plant Breeding). 2015;10 (4):1909-1914.
52. Zhani K, Hamdi W, Sedraoui S, Fendri R, Lajimi O, Agronomic evaluation of Tunisian accessions of chili pepper (*Capsicum frutescens* L.). International research journal of engineering and technology (IRJET). 2015;2:28-34.
53. Hasan MJ, Kulsum MU, Uttah MZ, Hossain MM, Mahmud ME. Genetic diversity of some chilli (*Capsicum annuum* L.) genotypes. Int. J. Agril. Res. Innov. & Tech. 2014;4(1):32-35.
54. Hasan MJ, Kulsum MU, Ullah MZ, Hossain MM, Mahmud ME. Genetic diversity of some chili (*Capsicum annuum* L.) genotypes. International Journal of Agricultural Research, Innovation and Technology (IJARIT) 2014;4(2355-2020-1551):32-35.
55. Singh P, Jain PK, Tiwari A. Principal component analysis approach for yield attributing traits in chilli (*Capsicum annuum* L.) genotypes. Chemical Science Review and Letters. 2020;9(33):87-91.
56. Farhad MI, Hasanuzzaman M, Biswas BK, Arifuzzaman M, Islam MM. Genetic divergence in chilli (*Capsicum annuum* L.). Bangladesh Res. Publ. J. 2010;3(3):1045-1051.
57. Geleta LF, Labuschagne MT, Viljoen CD. Genetic variability in pepper (*Capsicum annuum* L.) estimated by morphological data and amplified fragment length polymorphism markers. Biodivers.Conserv. 2005;14:2361–2375.
58. Mubarak BS. Evaluation of chilli germplasm for productivity, its component traits and resistance to some biotic stresses. M.Sc. (Agri.) Thesis, University of Agricultural Sciences, Dharwad. 2002;29.
59. Prabhudeva SA. Variability genetic diversity and heterosis study in chilli (*Capsicum annuum* L.). M.Sc. Thesis, University of Agricultural Sciences, Dharwad. 2003;31-32.
60. Abrham S, Mandefro N, Sentayehu A. Correlation and path coefficient analysis of hot pepper (*Capsicum annuum* L.) genotypes for yield and its components in ethiopia. advances in crop science and technology. 2017;5(3):1-5.
61. Bader AE, Gendy AE. Genotypic and phenotypic path analysis studies on chilli pepper (*Capiscum annuum* L.). Journal of productivity and development. 2018;23(2): 387-409.
62. Chilli outlook - Agricultural market intelligence centre, PJTSAU, August. 2021;1-3.
63. Dewey DR, Lu KH. A correlation and path coefficient analysis of components of wheat grass seed production. Agron. J. 1959;51:515-518.
64. Gagoi D, Gautum BP, Variability, heritability and genetic advance in chilli. Agric. Sci. Digest, 2002;22(2):102-104.
65. Johnson HN, Robinson HF, Comstock RE. Genotypic and phenotypic correlation in soybean and their implication in selection. Agron. J, 1955;47(10):477-483.
66. Lenka D, Mishra B. Path coefficient analysis of yield in rice varieties. Indian J. Agric. Sci. 1973;43(4):376.
67. R Core Team, R: A language and environment for statistical computing. R Foundation for Statistical Computing, Vienna, Austria; 2020. URL <https://www.R-project.org/>.
68. Sivasubramanian S, Madhavamenon P. Genotypic and phenotypic variability in rice. Madras Agric. J. 1973;60: 1093-1096.
69. Sreekumar G, Janavi GJ, Nageswari K, Venkatesan K, Muthiah C. Mohan MM.

- Correlation and path coefficient in F₃ generation Ramnadmundu Chilli (*Capsicum annum* L.) for growth, yield and quality. Eur. Chem. Bull. 2023; 12(10):13049-13057.
70. Tembhone BV, Hasan K, Naik MK, Patil BV. Genetic variability and association analysis for M₃ mutants in chilli (*Capsicum annum* L.). Journal of Farm Sciences. 2017;30(1):16-19.

© 2023 Babu et al.; This is an Open Access article distributed under the terms of the Creative Commons Attribution License (<http://creativecommons.org/licenses/by/4.0>), which permits unrestricted use, distribution, and reproduction in any medium, provided the original work is properly cited.

Peer-review history:

The peer review history for this paper can be accessed here:
<https://www.sdiarticle5.com/review-history/108679>